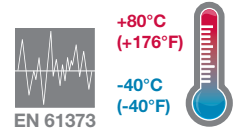


- > Port size: R1/8 ... R2, Rc1/8 ... Rc1, Rp11/4 ... Rp2
- > Reduce the noise levels of pneumatic equipment
- > High flow capacity with low back pressure
- > Brass mesh screen and aluminium construction
- > Provide improved flow, longer life and cleanable element
- > Shock and vibration resistant to EN 61373, Category 1, class A and B



Technical features

Medium:
Compressed air, filtered, lubricated and non-lubricated, inert gases

Operation:
Heavy duty silencer

Operating pressure:
20 bar (290 psi) maximum

Port size:
1/8", 1/4", 3/8", 1/2", 3/4", 1, 1 1/4", 1 1/2", 2"

Mounting:
Directly in exhaust port

Ambient/Media temperature:
-40 ... +80°C (-40 ... +176°F)
Air supply must be dry enough to avoid ice formation at temperatures below +2°C (+35°F).

Materials:
Body: aluminium and shell, Filter element: brass mesh

Technical data

Male thread, standard models

Symbol	Port size	Flow factor Cv	Flow factor C *1)	Kv *2)	Weight (kg)	Model
	1/8"	2	8,2	1,75	0,03	MB001#
	1/4"	2,2	9	1,92	0,03	MB002#
	3/8"	2,94	12	2,56	0,03	MBP03#
	3/8"	4,78	19,5	4,16	0,10	MB003#
	1/2"	5,49	22,4	4,78	0,09	MB004#
	3/4"	5,49	22,4	4,78	0,09	MBP06#
	3/4"	12,5	51	10,78	0,45	MB006#
	1"	15,68	64	13,65	0,40	MB008#
	1 1/4"	16,67	68	14,5	0,40	MBP10#

*1) Measured in dm³/(s.bar)

*2) Measured in m³/h

Please insert 'B' for ISO R and 'A' for NPT thread

Female thread, standard models

Symbol	Port size	Flow factor Cv	Flow factor C *1)	Kv *2)	Weight (kg)	Model ISO Rc
	1/8"	2	8,2	1,75	0,03	MA001#
	1/4"	2,57	10,5	1,29	0,03	MA002#
	3/8"	5,83	23,8	5,07	0,10	MA003#
	1/2"	5,71	23,3	4,97	0,09	MA004#
	3/4"	16,18	66	14,07	0,45	MA006#
	1"	16,67	68	14,5	0,40	MA008#

Please insert 'B' for ISO Rc and 'A' for NPT thread

Symbol	Port size	Flow factor Cv	Flow factor C *1)	Kv *2)	Weight (kg)	Model
	1 1/4"	26,7	110	23,45	0,62	MA010#
	1 1/2"	40,93	167	35,6	0,60	MA012#
	2"	53,9	220	46,9	0,76	MA016#

Please insert 'C' for ISO G (only for 1 1/4" ... 2"), 'A' for NPT thread

Option selector

Male thread

Port size	Substitute
1/8"	001
1/4"	002
3/8"	P03*
3/8"	003
1/2"	004
3/4"	P06*
3/4"	006
1"	008
1 1/4"	P10*
Thread form	Substitute
PTF	A
ISO R, taper	B

* Compact size

MB★★★★

Female thread

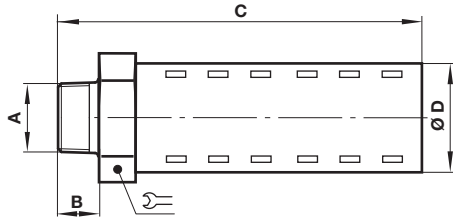
Port size	Substitute
1/8"	001
1/4"	002
3/8"	003
1/2"	004
3/4"	006
1"	008
1 1/4"	010
1 1/2"	012
2"	016
Thread form	Substitute
PTF	A
ISO Rc, taper	B
ISO Rp, parallel	C


MA★★★★

Dimensions

Dimensions in mm
Projection/First angle

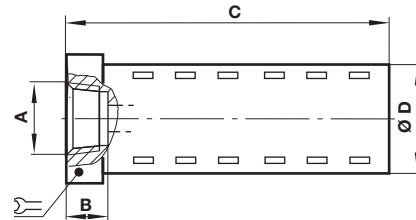
Male thread



A	B	C	D		Model
1/8"	9	51	21	21	MB001#
1/4"	13	55	21	21	MB002#
3/8"	13	55	21	21	MBP03#
3/8"	13	88	32	32	MB003#
1/2"	17	92	32	32	MB004#
3/4"	17	92	32	32	MBP06#
3/4"	20	134	51	51	MB006#
1"	23	138	51	51	MB008#
1 1/4"	26	140	51	51	MBP10#

Please insert 'B' for ISO R and 'A' for NPT thread

Female thread



A	B	C	Ø D		Model
1/8"	6	42	21	21	MA001#
1/4"	9	45	21	21	MA002#
3/8"	9	78	32	32	MA003#
1/2"	12	83	32	32	MA004#
3/4"	12	118	51	51	MA006#
1"	15	118	51	51	MA008#
1 1/4 "	15	144	64	64	MA010#
1 1/2"	15	144	64	64	MA012#
2"	16	168	76	76	MA016#

Please insert 'B' for ISO R and 'A' for NPT thread,
'C' for ISO G (only for 1 1/4" ... 2")

Warning

These products are intended for use in industrial compressed air and rail transport systems only. Do not use these products where pressures and temperatures can exceed those listed under

»Technical features/data«.

Before using these products with fluids other than those specified, for non-industrial applications, life-support systems or other applications not within published specifications, consult IMI NORGREN.

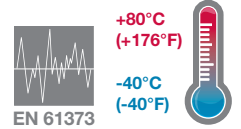
Through misuse, age, or malfunction, components used in fluid power systems can fail in various modes.

The system designer is warned to consider the failure modes of all component parts used in fluid power systems and to provide adequate safeguards to prevent personal injury or damage to equipment in the event of such failure.

System designers must provide a warning to end users in the system instructional manual if protection against a failure mode cannot be adequately provided.

System designers and end users are cautioned to review specific warnings found in instruction sheets packed and shipped with these products.

- > Port size: M5, R1/8 ... R1, G1/8 ... G1
- > Reduce the noise levels of pneumatic equipment
- > Compact and efficient
- > Screw directly into the exhaust port
- > Prevent the ingress of dirt
- > Shock and vibration resistant to EN 61373, Category 1, class A and B



Technical features

Medium:

Compressed air, filtered, lubricated or non lubricated, vacuum, Inert gases

Operation:

Exhaust silencer or inlet filter

Operating pressure:

10 bar (145 psi) maximum

Port size:

5, 1/8", 1/4", 3/8", 1/2", 3/4", 1"

Mounting:

Directly in exhaust or vent port

Ambient/Media temperature:

-40 ... +80°C (-40 ... +176°F)

Air supply must be dry enough to avoid ice formation at temperatures below +2°C (+35°F).

Materials:

Element: sintered bronze
Body: brass

Technical data, standard models

Symbol	Port size	Flow factor			Continuous sound pressure level *3)		Weight (kg)	Model with ISO G, parallel	Model with ISO R, taper
		C *1)	Cv	Kv *2)	0,7 bar	6 bar			
	M5	0,82	0,2	0,17	60	76	0,004	T40M0500	-
	1/8"	4,00	1	0,85	64	81	0,01	T40C1800	T40B1800
	1/4"	7,30	1,8	1,55	66	81	0,02	T40C2800	T40B2800
	3/8"	15,0	3,7	3,20	68	84	0,045	T40C3800	T40B3800
	1/2"	27,6	6,8	5,87	75	89	0,07	T40C4800	T40B4800
	3/4"	55,4	13,6	11,8	85	95	0,13	T40C6800	T40B6800
	1"	66,7	16,4	14,2	85	97	0,2	T40C8800	T40B8800

*1) Measured in dm³/ (s.bar)

*2) Measured in m³/h

*3) Measured in dBA/1 meter from unit

Option selector

T40★★★★00

Thread form	Substitute
Metric, M5 only	M
ISO R, taper	B
ISO G, parallel	C

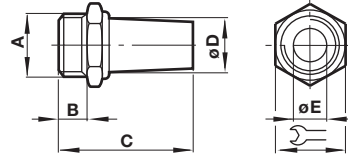
Port size	Substitute
M5	05
1/8"	18
1/4"	28
3/8"	38
1/2"	48
3/4"	68
1	88

Dimensions

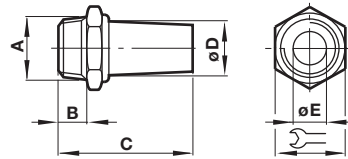
Dimensions in mm
 Projection/First angle



A	B	C	Ø D	Ø E		Model
M5	5	20	5	2,5	7	T40M0500
G1/8B	6	24	9,5	6	13	T40C1800
G1/4B	8	33	12	8,5	17	T40C2800
G3/8B	10	44	17	12	22	T40C3800
G1/2B	12	56	20	14,5	27	T40C4800
G3/4B	14	80	26	19	32	T40C6800
G1B	16	82	31	25	41	T40C8800



A	B	C	Ø D	Ø E		Model
R1/8	9,5	27,5	9,5	6	13	T40B1800
R1/4	11	36	12	8,5	17	T40B2800
R3/8	12,5	46,5	17	12	22	T40B3800
R1/2	16	60	20	14,5	27	T40B4800
R3/4	19	85	26	19	32	T40B6800
R1	22,5	88,5	31	25	41	T40B8800



Warning

These products are intended for use in industrial compressed air and rail transport systems only. Do not use these products where pressures and temperatures can exceed those listed under

»Technical features/data«.

Before using these products with fluids other than those specified, for non-industrial applications, life-support systems or other applications not within published specifications, consult IMI NORGREN.

Through misuse, age, or malfunction, components used in fluid power systems can fail in various modes.

The system designer is warned to consider the failure modes of all component parts used in fluid power systems and to provide adequate safeguards to prevent personal injury or damage to equipment in the event of such failure.

System designers must provide a warning to end users in the system instructional manual if protection against a failure mode cannot be adequately provided.

System designers and end users are cautioned to review specific warnings found in instruction sheets packed and shipped with these products.

- > **Stem: Ø 4 ...12 mm**
Ø 5/32 ...3/8"
- > **Reduce the noise levels of pneumatic equipment**
- > **Compact, efficient and lightweight**
- > **Insert directly into Push-in fitting exhaust port**
- > **Prevent the ingress of dirt**
- > **Low cost**



Technical features

Medium:

Compressed air, filtered 50 µm, lubricated and non lubricated/ vacuum, inert gases

Operation:

Exhaust silencer/vacuum filter

Operating pressure:

-1 ... +10 bar (-14 ... 145 psi) (vacuum service)

Stem:

Ø 4, 6, 8, 10, 12 mm
Ø 5/32, 1/4, 5/16, 3/8 inch

Mounting:

Directly in Push-in fittings


Ambient/Media temperature:

-20 ... +80°C (-4 ... 176°F)
Air supply must be dry enough to avoid ice formation at temperatures below +2°C (+35°F).

Materials:

Body: UHMW PE porous plastic (light grey)
Stem: PE (black)

Technical data, standard models

Symbol	Stem size (mm)	Mean flow factor			Sound pressure *3)		Model
		C *1	Cv	Kv *2	(0,7 bar)	(6 bar)	
	4	0,82	0,2	0,17	67	84	T45P0004
	6	1,6	0,39	0,34	72	83	T45P0006
	8	3	0,74	0,64	68	85	T45P0008
	10	6,5	1,55	1,35	70	87	T45P0010
	12	9,9	2,43	2,11	73	89	T45P0012

*1) Measured in dm³/ (s.bar)

*2) Measured in m³/h

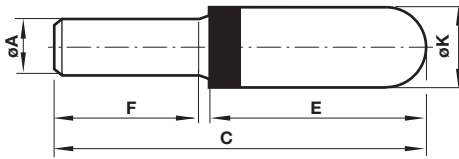
*3) Measured in dBA/6bar/1 meter from unit

Option selector

Option selector		T45★00★★		Option selector	
Stem size	Substitute	Stem Ø (mm)	Substitute	Stem Ø (inch)	Substitute
Metric	P	4	04	5/32	02
Inch	Y	6	06	1/4	04
		8	08	5/16	05
		10	10	3/8	06
		12	12		

Dimensions

Dimensions in mm
Projection/First angle



Ø A	C	E	F	Ø K	Weight (g)	Model
4	32	16	14	6,5	1	T45P00004
6	45	24,5	17	12,5	1,5	T45P00006
8	43,5	22	19	13,5	2	T45P00008
10	57,5	31	23	15,5	3,5	T45P00010
12	82	53	25	18,5	7	T45P00012

Ø A	C	E	F	Ø K	Weight (g)	Model
5/32	32	16	14	6,5	1	T45Y00004
1/4	45	24,5	17	12,5	1,5	T45Y00006
5/16	43,5	22	19	13,5	2	T45Y00008
3/8	57,5	31	23	15,5	3,5	T45Y00010

Warning

These products are intended for use in industrial compressed air systems only. Do not use these products where pressures and temperatures can exceed those listed under

»Technical features/data«.

Before using these products with fluids other than those specified, for non-industrial applications, life-support systems or other applications not within published specifications, consult IMI NORGREN.

Through misuse, age, or malfunction, components used in fluid power systems can fail in various modes.

The system designer is warned to consider the failure modes of all component parts used in fluid power systems and to provide adequate safeguards to prevent personal injury or damage to equipment in the event of such failure.

System designers must provide a warning to end users in the system instructional manual if protection against a failure mode cannot be adequately provided.

System designers and end users are cautioned to review specific warnings found in instruction sheets packed and shipped with these products.