

- > **Port size: G1/4**
- > **Precision instruments with integral pilot to ensure very close pressure control in a compact form**
- > **Panel mounting facility**



Note: Not recommended for dead-end applications

Technical features

Medium:

Compressed air
 Note: 5 µm prefiltration and oil-free are required!

Maximum inlet pressure:

8 bar (116 psi) (low)
 10 bar (145 psi) (standard)
 14 bar (203 psi) (high)

Flow:

See diagrams on page 2

Relieving:

Standard

Pressure range:

0,07 ... 4 bar (1 ... 58 psi) (standard)
 0,02 ... 0,5 bar (0,2 ... 7 psi) (low)
 0,4 ... 10 bar (5,8 ... 145 psi) (high)

Port size:

G1/4

Gauge port:

See table below

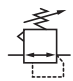
Ambient/Media temperature:

0 ... +70°C (+32° ... +158°F)
 Version with gauge:
 0 ... +65°C (+32° ... +149°F)
 Air supply must be dry enough to avoid ice formation at temperatures below +2°C (+35°F).

Materials:

Body & bonnet: Zinc alloy
 Adjusting knob: Acetal resin
 Elastomers: NBR

Technical data, standard models

Symbol	Port size	Pressure range (bar)	Accuracy (bar) *1)	Relieving	Gauge port	Tamper proof adjusting screw	Weight (kg)	Model
	G1/4	0,02 ... 0,5 (low)	0,01	Standard	—	—	0,64	11-818-999
	G1/4	0,02 ... 0,5 (low)	0,01	Standard	—	Standard	0,64	11-818-998
	G1/4	0,07 ... 4 (standard)	0,03	Standard	—	—	0,64	11-818-100
	G1/4	0,07 ... 4 (standard)	0,03	Standard	—	Standard	0,64	11-818-101
	G1/4	0,4 ... 10 (high)	0,05	Standard	—	—	0,64	11-818-110
	G1/4	0,02 ... 0,5 (low)	0,01	Standard	R1/4	—	0,64	11-818-987
	G1/4	0,07 ... 4 (standard)	0,03	Standard	R1/4	—	0,64	11-818-993
	G1/4	0,4 ... 10 (high)	0,05	Standard	R1/4	—	0,64	11-818-991

*1) Typical mid-range variance from set pressure with 7 bar inlet at 2 dm³/s

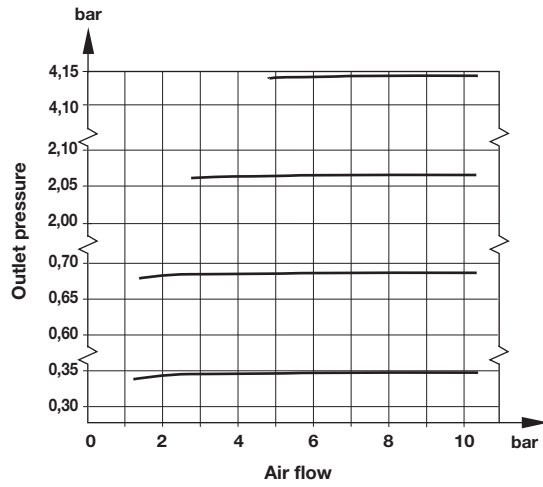
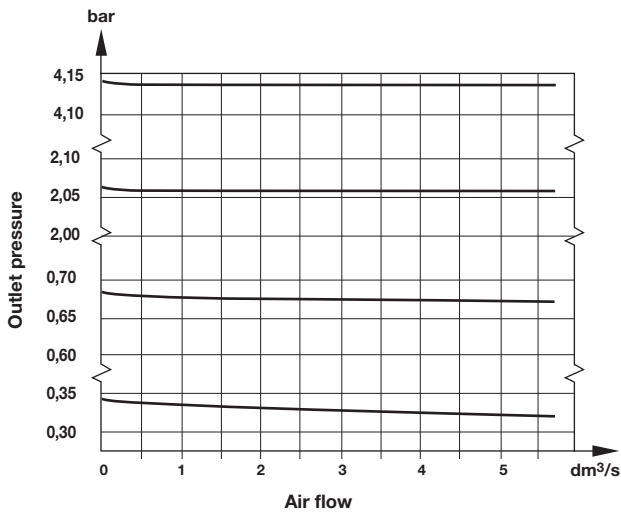
Note: 11-818 is not a constant bleed device, when being used under flow conditions no air is consumed. Air bleed is only effective under zero flow conditions as in a dead end application.

Flow characteristics

Regulating characteristics

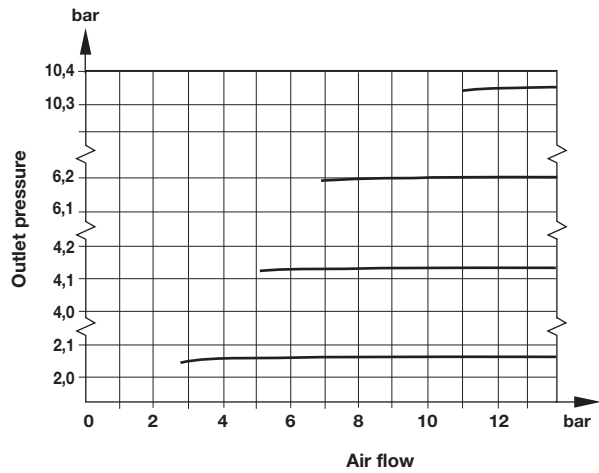
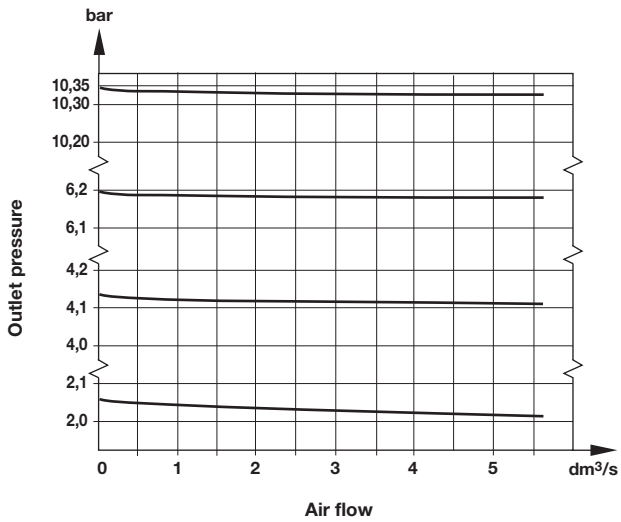
Standard pressure version:

Inlet pressure 7 bar (100 psi); pressure range 0,1 ... 4,1 bar (1 ... 60 psi)



High pressure version:

Inlet pressure 14 bar (200 psi); pressure range 0,2 ... 10,35 bar (3 ... 150 psi)



Accessories

Gauge
Ø 40 mm, Port size R1/8



Concentric reducing adaptors for gauge ports



0 ... 1,6 bar: 18-013-991

R1/4-G1/8 150232818

0 ... 4 bar: 18-013-990

0 ... 10 bar: 18-013-989

Service kits

Service kits

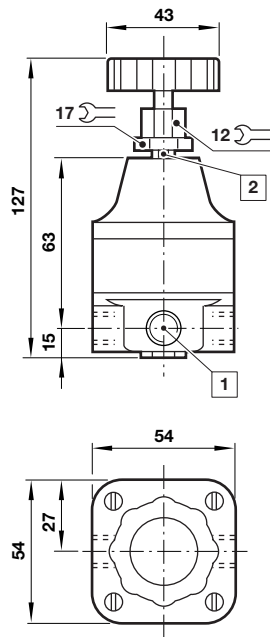


2787-96 (low pressure)

2787-98 (standard pressure)

2787-97 (high pressure)

Dimensions

 Dimensions in mm
 Projection/First angle


- 1 Gauge port R1/4 for models 11-818-979, 11-818-993 and 11-818-991 only
- 2 Panel mounting hole > \varnothing 12 mm wall thickness < 6 mm

Warning

These products are intended for use in industrial compressed air systems only. Do not use these products where pressures and temperatures can exceed those listed under

» Technical features/data«.

Before using these products with fluids other than those specified, for non-industrial applications, life-support systems or other applications not within published specifications, consult IMI Precision Engineering, Norgren Inc.

Through misuse, age, or malfunction, components used in fluid power systems can fail in various modes.

The system designer is warned to consider the failure modes of all component parts used in fluid power systems and to provide adequate safeguards to prevent personal injury or damage to equipment in the event of such failure.

System designers must provide a warning to end users in the system instructional manual if protection against a failure mode cannot be adequately provided.

System designers and end users are cautioned to review specific warnings found in instruction sheets packed and shipped with these products.

Designed for systems that require pressure regulation at an inaccessible location.

A pilot regulator (ordered separately) controls the outlet pressure of the pilot operated regulator.

Technical data

Fluid:

Compressed air, neutral gases
NOTE: Contact technical support for use with other media.

Inlet pressure range:

10 psig (0.7 bar) to 400 psig (27.6 bar)

Operating temperature:

0° to 175°F (-20° to 80°C) **
** Air supply must be dry enough to avoid ice formation at temperatures below 35°F (2°C).

Materials

11-042

Body: zinc
Bonnet: aluminum
Bottom plug: acetal
Valve: brass
Elastomers: nitrile

Port sizes	Main	Gauge	Pilot	Exhaust
1/4"	1/4"	1/4"	1/4"	3/4"
3/8"	3/8"	3/8"	1/4"	3/4"
1/2", 3/4", 1"	1/2"	1/4"	1/4"	3/4"
1", 1-1/4"				

11-008

Constant bleed type

11-008

Body: zinc
Bonnet: aluminum
Bottom plug:
1/2", 3/4 ports: glass filled nylon
1" ports: aluminum
Gauge port: 1/8" NPT
Pilot port: 1/4" NPT
Valve: brass
Elastomers: nitrile



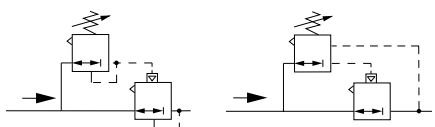
11-042



11-008
Constant bleed type

11-042 and 11-008 Pilot Operated Regulator Ordering Information

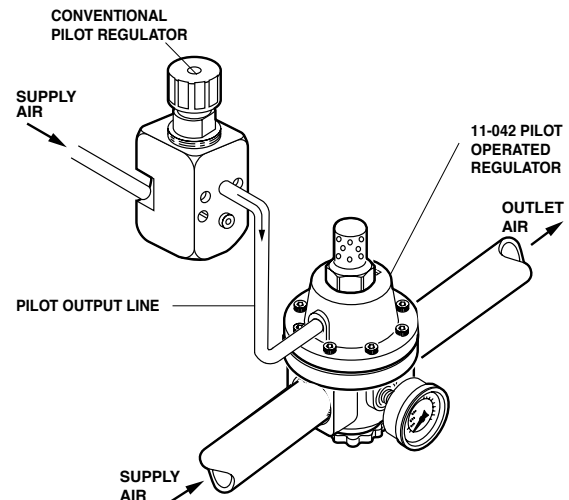
Models listed include relieving diaphragm and PTF threads. Also order a pilot regulator. Requires a pilot regulator (ordered separately).

ISO Symbols	Port Size	Model	Flow* scfm (dm ³ /s)	Weight lb (kg)
 <p>With Conventional Pilot Regulator</p> <p>With Feedback Pilot Regulator</p>	1/4"	11-042-001	120 (57)	2.8 (1.3)
	3/8"	11-042-002	120 (57)	2.7 (1.2)
	1/2"	11-042-003	120 (57)	2.6 (1.2)
	3/4"	11-042-007	300 (142)	4.8 (2.2)
	1"	11-042-008	300 (142)	4.6 (2.1)
	1-1/4"	11-042-009	300 (142)	4.3 (2.0)
	1/2"	11-008-130	70 (33)	1.6 (0.7)
	3/4"	11-008-009	110 (52)	4.9 (2.2)
	1"	11-008-110	180 (85)	4.6 (2.1)

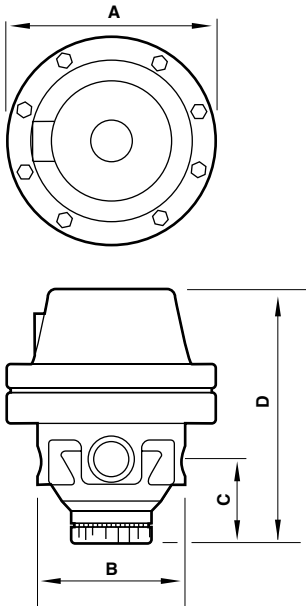
* Typical flow with 100 psig (0.7 bar) inlet pressure, 90 psig (6.3 bar) set pressure and a droop of 5 psig (0.35 bar) from set.

Feedback Pilot Regulator Warning

The feedback line must sense the pilot operated regulator outlet pressure and must be connected before turning on the air supply. If the feedback line is not connected, the pilot operated regulator outlet pressure will rapidly increase to the inlet pressure when the adjusting knob on the pilot regulator is turned clockwise.

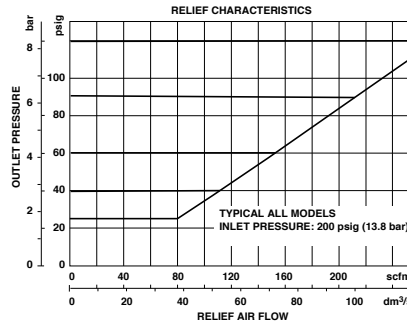
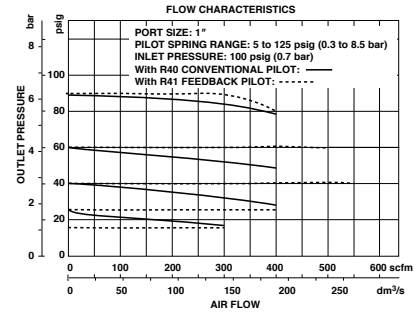
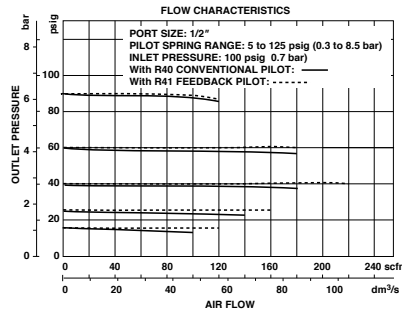


11-042



Port Size	A	B	C	D
1/4", 3/8", 1/2"	4.16 (106)	2.71 (69)	1.48 (38)	5.07 (129)
3/4", 1", 1-1/4"	4.16 (106)	3.65 (93)	1.86 (47)	5.97 (152)

Typical Performance Characteristics

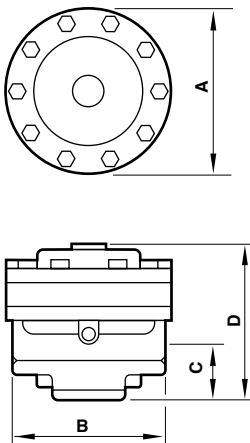


11-042 Service Kits

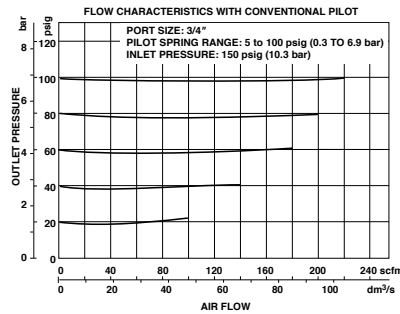
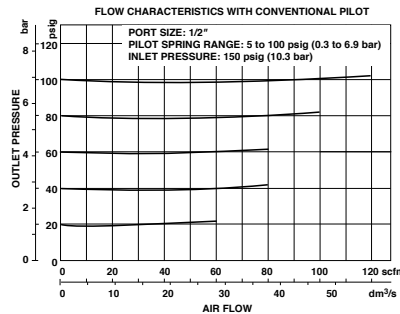
Type	Part number
Kit for 1/4", 3/8", 1/2" units	4158-01
Kit for 3/4", 1", 1-1/4" units	4158-02
O-ring kit for 1/4", 3/8", 1/2" units	4158-03
O-ring kit for 3/4", 1", 1-1/4" units	4158-04

Kit contains filter screen, diaphragm, and all o-rings. O-ring kit contains filter screen and all o-rings.

11-008



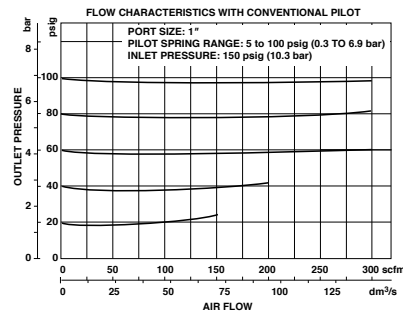
Port Size	A	B	C	D
1/2"	3.34 (85)	3.38 (86)	1.50 (38)	3.30 (84)
3/4", 1"	4.91 (125)	4.63 (118)	1.69 (43)	4.36 (111)



11-008 Service Kits

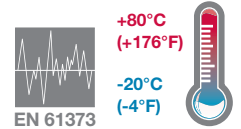
Type	Part number
1/2" ported units	695-01
3/4", 1" ported units	696-01

Kit contains diaphragm, valve, and all o-rings.



Dimensions in inches (mm)

- > Port size G1/2 ... G1
 - > Ported regulators for general purpose and high flow pneumatic applications
 - > Large diaphragm provides accurate and quick response to changing flow demands and line pressure
 - > Balanced valve
- minimizes effect of variations in inlet pressure on outlet pressure
 - > Extensive range of applications
 - > Wide temperature range
 - > Shock and vibration tested to EN 61373, Category 1, class A and B



Technical features

Medium:
Compressed air only
Maximum inlet pressure:
28 bar (406 psi) max.
Pressure range:
0,1 ... 3,5 bar (1 ... 50 psi),
0,2 ... 8 bar (3 ... 116 psi)
0,7 ... 17 bar (10 ... 246 psi)
(1/2" version only)

Port sizes:
1/2", 3/4" or 1"
Gauge port:
1/8 PTF with PTF main ports
Rc1/8 with ISO G main ports

Ambient/Media temperature:
-20 ... +80°C (-4 ... +176 °F)
Version with gauge:
-20° ... +65°C (-4° ... +149°F)
Air supply must be dry enough to avoid ice formation at temperatures below +2°C (+35 °F)

Materials:
Body: Zinc alloy
Bonnet: Aluminium alloy
Bottom plug: Glass filled nylon for G 1/2, aluminium for G 3/4 and G 1
Adjusting screw: Steel-plated
Elastomers: Synthetic rubber

Technical data, standard models

Symbol	Port size	Pressure range (bar)	Flow * (dm³/s)	Relieving	Adjustment	Weight (kg)	Model ISO G thread	PTF thread
	1/2"	0,1 ... 3,5	60	Standard	T-bar	1,40	20AG-X4G-PD100	20AG-X4G-AD100
	1/2"	0,2 ... 8	60	Standard	T-bar	1,30	20AG-X4G-PH100	20AG-X4G-AH100
	1/2"	0,7 ... 17	60	Standard	T-bar	1,30	20AG-X4G-PJ100	20AG-X4G-AJ100
	3/4"	0,1 ... 3,5	80	Standard	T-bar	2,75	20AG-X6G-PD100	20AG-X6G-AD100
	3/4"	0,2 ... 8	80	Standard	T-bar	2,85	20AG-X6G-PH100	20AG-X6G-AH100
	1"	0,1 ... 3,5	100	Standard	T-bar	2,44	20AG-X8G-PD100	20AG-X8G-AD100
	1"	0,2 ... 8	100	Standard	T-bar	2,90	20AG-X8G-PH100	20AG-X8G-AH100

Typical flow with 7 bar inlet pressure, 4 bar set pressure and 1 bar droop from set.

Option selector

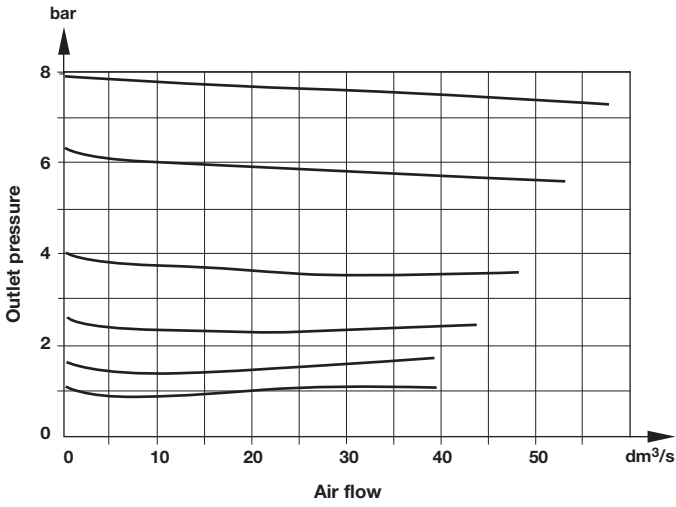
20AG-★G-★1★

Diaphragm	Substitute		Options *2)	Substitute
Relieving (standard)	X		T-bar handle (standard)	00
Non-relieving - (no digit)			Panel mounted with plastic handwheel, 1/2" only	03
Port size	Substitute		Pressure ranges *1)	Substitute
1/2"	4		0,1 ... 3,5 bar	D
3/4"	6		0,2 ... 8 bar	H
1"	8		0,7 ... 17 bar, 1/2" only	J
			Thread form	Substitute
			PTF	A
			ISO G parallel	P

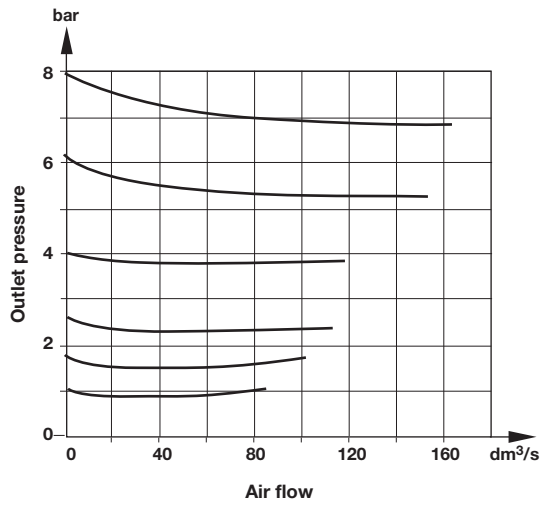
*1) Outlet pressure can be adjusted to pressures in excess of, and less than, those specified. Do not use these units to control pressures outside of the specified ranges.
*2) Other seals or use other gases might be possible - please contact Norgren

Flow characteristics

Inlet pressure: 10 bar, port size: 1/2"
Range: 0,2 ... 8 bar



Inlet pressure: 10 bar, port size: 1"
Range: 0,2 ... 7 bar



Accessories



Accessories

Wall mounting bracket

1



Port size

G 1/2	18-001-005
G 3/4 & G 1	18-001-029

Service kits



Model

20AG-X4G/**100 (relieving)	20AG-X4-100
20AG-4G/**100 (non-relieving)	20AG-4-100
20AG-X6G/**100 (relieving)	20AG-X8-100
20AG-6G/**100 (non-relieving)	20AG-8-100
20AG-X8G/**100 (relieving)	20AG-X8-100
20AG-8G/**100 (non-relieving)	20AG-8-100

Gauges

Center back connection, white face (full technical specification see datasheet 8.900.900)



2

Pressure range bar *1	MPa	psi	Ø	Thread size	Model
0 ... 4	0 ... 0,4	0 ... 58	50 mm	R1/8	18-015-011
0 ... 10	0 ... 1	0 ... 145	50 mm	R1/8	18-015-013
0 ... 25	0 ... 2,5	0 ... 362	50 mm	R1/8	18-015-014

*1) primary scale

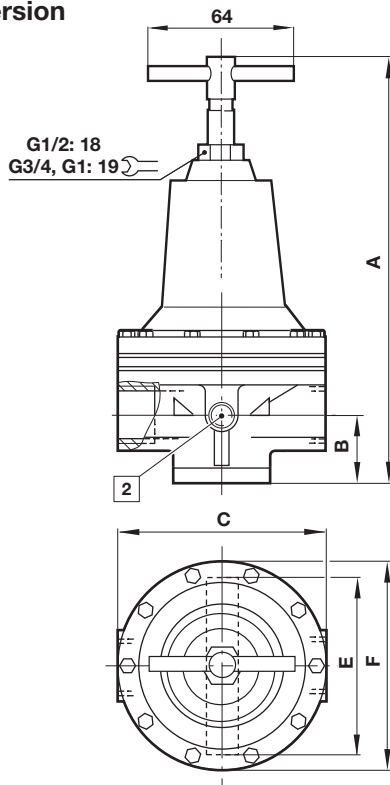
Center back connection, black face for North America (full technical specification see datasheet 8.900.900)



2

Pressure range psig *1	bar	MPa	Ø	Thread size	Model
0 ... 60	0 ... 4	0 ... 0,4	2" (50 mm)	1/8 NPT	18-015-202
0 ... 160	0 ... 11	0 ... 1,1	2" (50 mm)	1/8 NPT	18-015-204
0 ... 400	0 ... 28	0 ... 2,8	2" (50 mm)	1/8 NPT	18-015-206

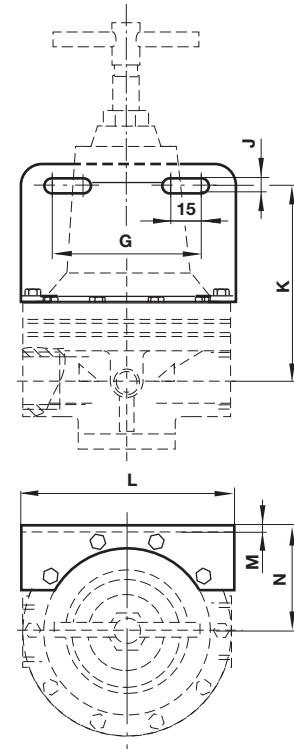
*1) primary scale

Dimensions
Standard version


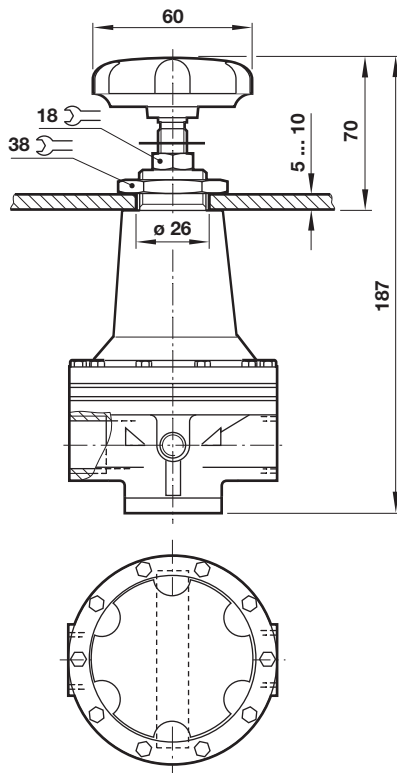
2 Gauge port

Port size	A	B	C	E	Ø F	P
G1/2	162	36	86	82	83	179
G3/4	232	41	124	108	124	245
G1	232	41	124	108	124	245

Bracket mounting

 Dimensions in mm
 Projection/First angle


Port size	G	J	K	L	M	N
G1/2	63	7	73	83	2	57
G3/4	98	8	80	124	2	75
G1	98	8	80	124	2	75

Panel mounted with plastic handwheel, 1/2" only


Warning

These products are intended for use in industrial compressed air and rail transport systems only. Do not use these products where pressures and temperatures can exceed those listed under

»Technical features/data«.

Before using these products with fluids other than those specified, for non-industrial applications, life-support systems or other applications not within published specifications, consult IMI NORGREN.

Through misuse, age, or malfunction, components used in fluid power systems can fail in various modes.

The system designer is warned to consider the failure modes of all component parts used in fluid power systems and to provide adequate safeguards to prevent personal injury or damage to equipment in the event of such failure.

System designers must provide a warning to end users in the system instructional manual if protection against a failure mode cannot be adequately provided.

System designers and end users are cautioned to review specific warnings found in instruction sheets packed and shipped with these products.

- > **Port size: 1/4" ... 3/4"**
(ISO G/PTF)
- > **Non-rising adjusting knob has snap-action lock**
- > **Diaphragm and balanced valve design ensure good regulation characteristics**



Technical features

Medium:

Compressed air only

Maximum operating pressure:

17 bar (246 psi)

Pressure range:

(standard)

0,3 ... 10 bar (4 ... 145 psi)

(optional)

0,4 ... 4 bar (5 ... 58 psi),

0,7 ... 17 bar (10 ... 246 psi)

Port sizes:

1/4", 3/8", 1/2" or 3/4"

Gauge port:

1/8 PTF with PTF main ports

Rc1/8 with ISO G main ports

Flow:

See table below

Relieving:

With (standard)

Non-relieving (optional)

Ambient/Media temperature:

-20° ... +80°C (-4° ... +176°F)

Version with gauge:

-20° ... +65°C (-4° ... +149°F)

Air supply must be dry enough to avoid ice formation at temperatures below +2°C (+35°F).

Materials:

Body and yoke: Zinc alloy

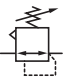
Connection piece: Aluminium

Bonnet: Aluminium

Adjusting knob: Acetal resin

Elastomers: NBR

Technical data, standard models with relieving

Symbol	Port size	Size	Pressure range (bar)	Flow * (dm³/s)	Adjustment	Weight (kg)	Model
	G1/4	—	0,3 ...10	35	Knob	1,63	R64G-2GK-RMN
	G3/8	—	0,3 ...10	80	Knob	1,61	R64G-3GK-RMN
	G1/2	Basic	0,3 ...10	120	Knob	1,59	R64G-4GK-RMN
	G3/4	—	0,3 ...10	120	Knob	1,87	R64G-6GK-RMN
	Without yoke	—	0,3 ...10	—	Knob	1,16	R64G-NNK-RMN

* Typical flow with 10 bar (145 psi) inlet pressure, and 6,3 bar (91 psi) set pressure and 1 bar (14.5 psi) drop from set.

Option selector

Port size	Substitute
1/4"	2
3/8"	3
1/2"	4
3/4"	6
Without yoke	N
Thread	Substitute
PTF	A
ISO G (standard)	G
Without yoke (standard)	N
Adjustment	Substitute
Knob (standard)	K
T-bar (0,7 ... 17 bar)	T *2)

R64G-★-★-★-★-★

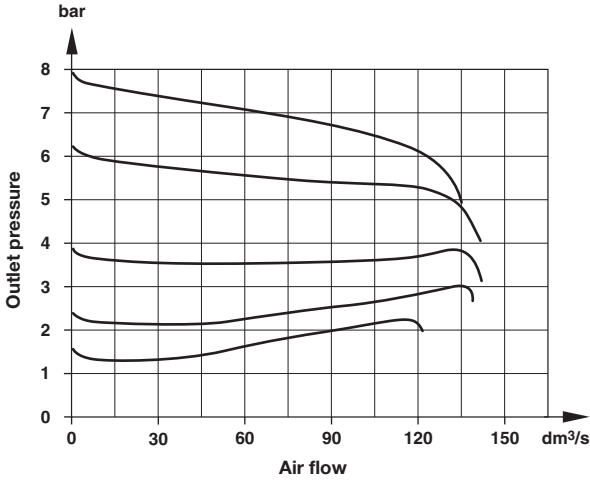
Gauge	Substitute
With	G
Without (standard)	N
Pressure range (bar) *1)	Substitute
0,3 ...10 (standard)	M
0,3 ... 4	F
0,7 ... 17	S*2)
Diaphragm	Substitute
Relieving (standard)	R
Non-relieving	N

*1) Outlet pressure can be adjusted to pressures in excess of and less than, those specified. Do not use these units to control pressures outside of the specified ranges.

*2) Units with 17 bar (246 psi) outlet pressure range are available only with the T-bar adjustment; therefore substitute T at the 7th digit and S at the 9th position.

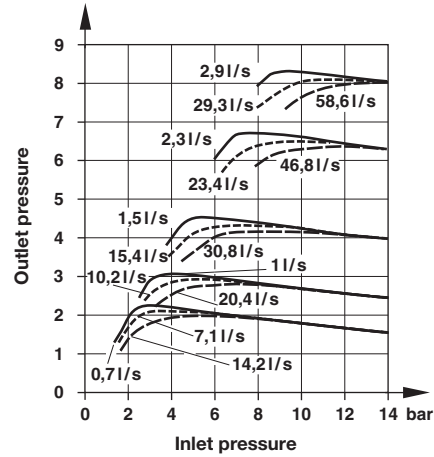
Flow characteristics

Inlet pressure: 10 bar, port size: 1/2"
Pressure range: 0,3 ... 10 bar



Regulating characteristics







Port size: 1/2"










Accessories, service kit and gauges



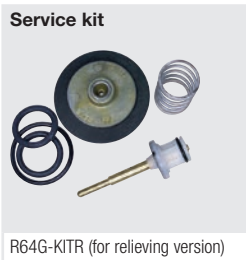
Accessories

	Models with G-thread Single yoke	Double yoke	3/2 Shut-off valve Threaded inlet only	Threaded outlet only	End connector kit	Rear entry bracket kit
						
Thread	5				2	8
G1/4	Y64A-2GA-N1N	Y64A-2GA-N2N	T64T-2GB-P1N	T64T-2GC-P1N	—	—
G3/8	Y64A-3GA-N1N	Y64A-3GA-N2N	T64T-3GB-P1N	T64T-3GC-P1N	—	—
G1/2	Y64A-4GA-N1N	Y64A-4GA-N2N	T64T-4GB-P1N	T64T-4GC-P1N	74505-50	—
G3/4	Y64A-6GA-N1N*	Y64A-6GA-N2N*	T64T-6GB-P1N	T64T-6GC-P1N	74505-53	18-026-981
1/4 PTF	Y64A-2AA-N1N	Y64A-2AA-N2N	T64T-2AB-P1N	T64T-2AC-P1N	—	—
3/8 PTF	Y64A-3AA-N1N	Y64A-3AA-N2N	T64T-3AB-P1N	T64T-3AC-P1N	—	—
1/2 PTF	Y64A-4AA-N1N	Y64A-4AA-N2N	T64T-4AB-P1N	T64T-4AC-P1N	74505-52	—
3/4 PTF	Y64A-6AA-N1N*	Y64A-6AA-N2N*	T64T-6AB-P1N	T64T-6AC-P1N	74505-55	—

*These yokes are supplied with two end connector kits as standard.

Bracket mounting	Nut	Tamper resistant cap & seal wire	Yoke connector kit	Porting block	Adjustable pressure switch	Padlock with two keys
 1	 4	 3	 9			
74504-50	74502-89	4355-51	74503-51	74507-50	4346-99	0613633 (brass)

Service kit



Gauges

Center back connection, white face (full technical specification see datasheet 8.900.900)



6

Pressure range bar *1	MPa	psi	Ø	Thread size	Model
0 ... 4	0 ... 0,4	0 ... 58	50 mm	R1/8	18-013-011
0 ... 10	0 ... 1	0 ... 145	50 mm	R1/8	18-013-013
0 ... 25	0 ... 2,5	0 ... 362	50 mm	R1/8	18-013-014

*1) primary scale

Center back connection, black face for North America (full technical specification see datasheet 8.900.900)



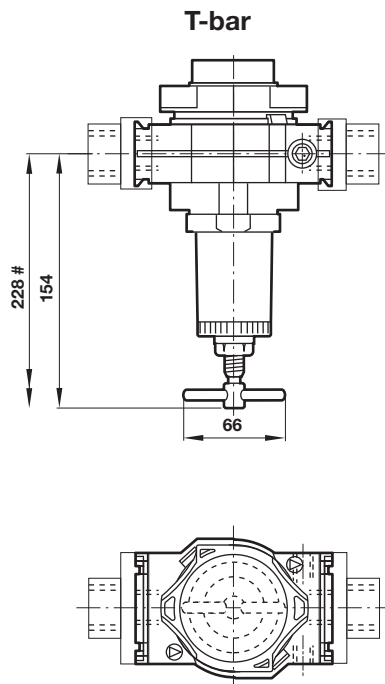
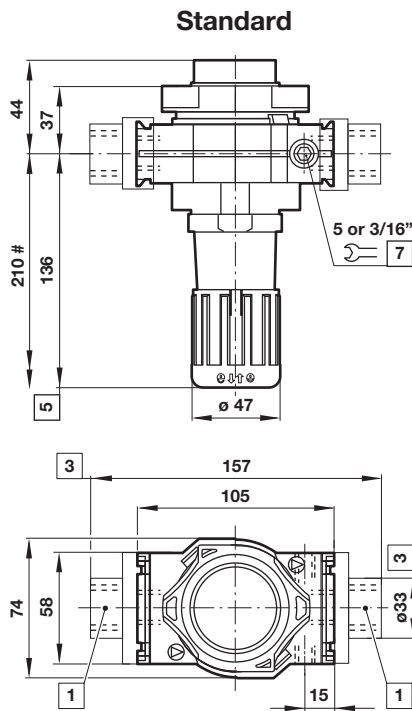
6

Pressure range psig *1	bar	MPa	Ø	Thread size	Model
0 ... 60	0 ... 4	0 ... 0,4	2" (50 mm)	1/8 NPT	18-013-202
0 ... 160	0 ... 11	0 ... 1,1	2" (50 mm)	1/8 NPT	18-013-204
0 ... 400	0 ... 28	0 ... 2,8	2" (50 mm)	1/8 NPT	18-013-206

*1) primary scale

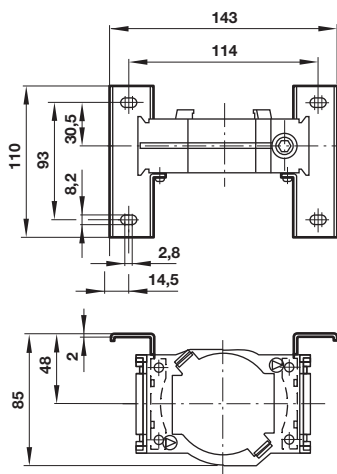
Basic dimensions

Dimensions in mm
Projection/First angle

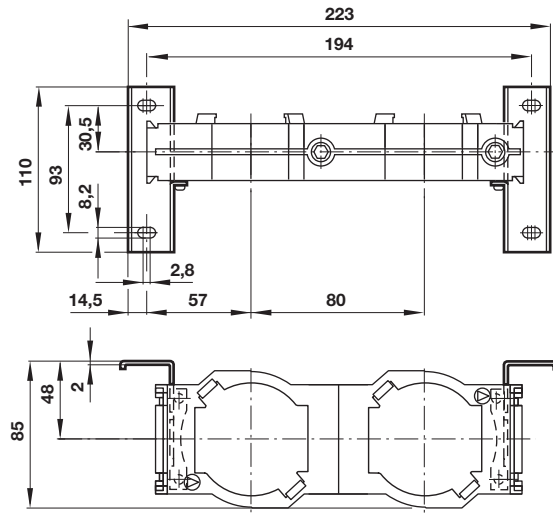


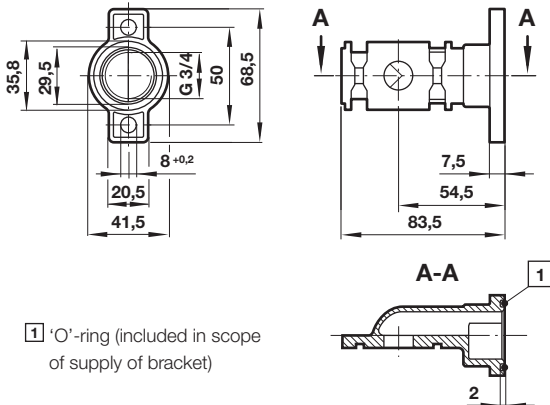
- # Minimum clearance required to remove unit from yoke
 1 Main ports 1/4", 3/8", 1/2" or 3/4"
 3 For main ports 3/4" only
 5 Reduces by 4 mm with knob in locked position
 7 Gauge port

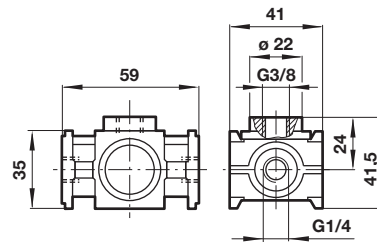
Single yoke with bracket mounting



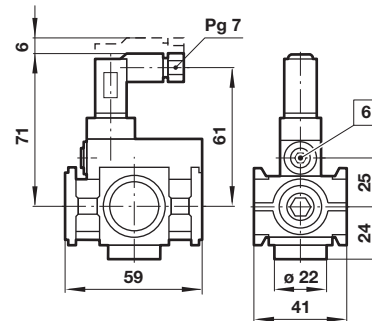
Double yoke with bracket mounting



**Rear entry bracket
18-026-981**

**Porting block
74507-50**

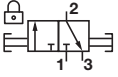
 Dimensions in mm
Projection/First angle

**Adjustable pressure switch
4346-99**

Voltage	24 V d.c./240 V a.c.
Current	0,5 A (d.c.); 5 A (a.c.)
Pressure range	2 ... 10 bar
Repeatability	2% of full set point range at 20°C
Average deadband	0,8 ... 1,7 bar
Electrical connection (corresponding to choosen coil)	EN 175301-803 - Form C, 15 mm
Degee of protection:	IP65
Adjustable	Standard
Material	Body: Aluminium, Elastomers: NBR

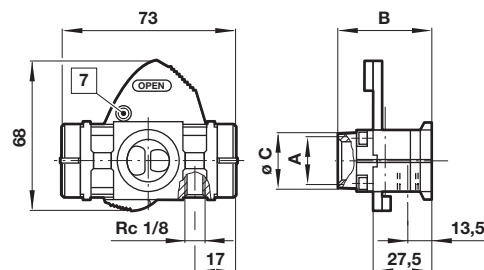


6 Adjusting screw

3/2 Shut-off valve

Symbol	A	B	ø C	Model
	G1/4	48	27	T64T-2G*-P1N
	G3/8	48	27	T64T-3G*-P1N
	G1/2	48	27	T64T-4G*-P1N
	G3/4	51	33	T64T-6G*-P1N

* B = Threaded inlet only, C = Threaded outlet only



7 Padlock hole 7,5 mm

Warning

These products are intended for use in industrial compressed air systems only. Do not use these products where pressures and temperatures can exceed those listed under

»Technical features/data«.

Before using these products with fluids other than those specified, for non-industrial applications, life-support systems or other applications not within published specifications, consult IMI Precision Engineering, IMI International s.r.o.

Through misuse, age, or malfunction, components used in fluid power systems can fail in various modes.

The system designer is warned to consider the failure modes of all component parts used in fluid power systems and to provide adequate safeguards to prevent personal injury or damage to equipment in the event of such failure.

System designers must provide a warning to end users in the system instructional manual if protection against a failure mode cannot be adequately provided.

System designers and end users are cautioned to review specific warnings found in instruction sheets packed and shipped with these products.

- > **Port size: 3/4" ... 1 1/2"**
(ISO G/PTF)
- > **Non-rising adjusting knob has snap-action lock**
- > **Diaphragm and balanced valve design ensure good regulation characteristics**



Technical features

Medium:

Compressed air only

Maximum operating pressure:

20 bar (290 psi)

Pressure range:

(standard)

0,4 ... 8 bar (5.8 ... 116 psi)

(optional)

0,3 ... 4 bar (4.3 ... 58 psi),

0,7 ... 17 bar (10 ... 246 psi)

Port size:

G3/4, G1, G1 1/4, G1 1/2,
3/4 NPT, 1 NPT, 1 1/4 NPT,
1 1/2 NPT

Gauge port:

1/8 PTF with PTF main ports
Rc1/8 with ISO G main ports


Flow:

See table below

Relieving:

With standard,
Non-relieving optional

Standard compliances:

 II 2G Ex h IIC T6 Gb
II 2D Ex h IIIIC T85° Db

Ambient/Media temperature:

-20° ... +80°C (-4° ... +176°F)

Version with gauge:

-20° ... +65°C (-4° ... +149°F)

Air supply must be dry enough to
avoid ice formation at temperatures
below +2°C (+35°F).

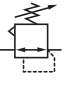
Materials:

Body, yoke and bonnet: Aluminium

Adjusting knob: Acetal resin

Elastomers: NBR

Technical data, standard models with relieving

Symbol	Port size	Size	Pressure range (bar)	Flow *1) (dm³/s)	Adjustment	Weight (kg)	Model
	G3/4	—	0,4 ... 8	150	Knob	1,95	R68G-6GK-RLN
	G1	Basic	0,4 ... 8	170	Knob	1,89	R68G-8GK-RLN
	G1 1/4	—	0,4 ... 8	170	Knob	1,93	R68G-AGK-RLN
	G1 1/2	—	0,4 ... 8	170	Knob	1,97	R68G-BGK-RLN
	Without yoke	—	0,4 ... 8	—	Knob	1,16	R68G-NNK-RLN

*1) Typical flow with 10 bar (145 psi) inlet pressure, and 6,3 bar (91 psi) set pressure and 1 bar (14.5 psi) drop from set.

Option selector

R68G-★ ★ ★ - ★ ★ ★

Port size	Substitute
3/4"	6
1"	8
1 1/4"	A
1 1/2"	B
Without yoke	N
Thread	Substitute
ISO G (standard)	G
PTF	A
Without yoke	N
Adjustment	Substitute
Knob (standard)	K
T-bar (0,7 ... 17 bar)	T

Gauge	Substitute
With	G
Without (standard)	N
Pressure range (bar) *2)	Substitute
0,3 ... 4	F
0,4 ... 8 (standard)	L
0,7 ... 17	S *3)
Diaphragm	Substitute
Relieving (standard)	R
Non-relieving	N

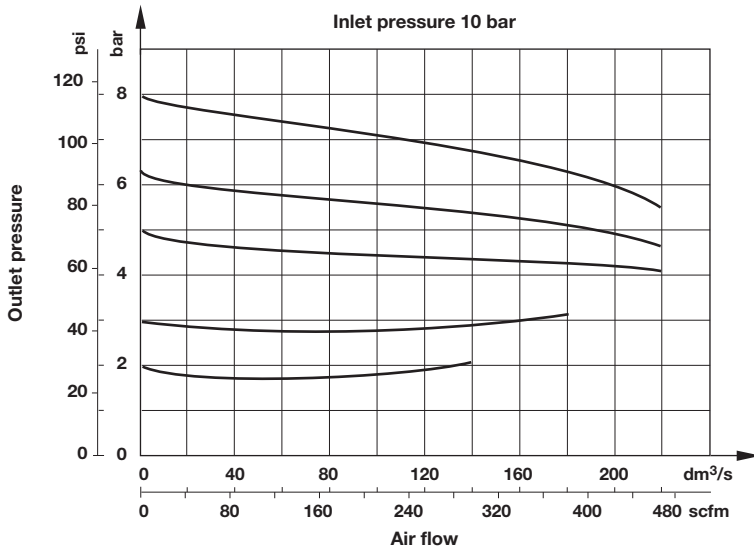
*2) Outlet pressure can be adjusted to pressures in excess of and less than, those specified. Do not use these units to control pressures outside of the specified ranges.

*3) Units with 17 bar (246 psi) outlet pressure range are available only with the T-bar adjustment; therefore substitute T at the 7th digit and S at the 9th position.

Flow characteristics

Port size 1"

Pressure range 0,4 ... 8 bar



Accessories, service kit and gauges

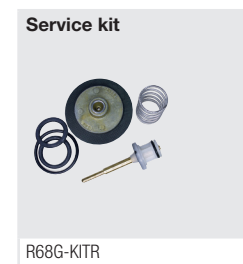


Accessories

	Single yoke	Double yoke	End connector kit	Single yoke non threads	3/2 Shut-off valve Threaded inlet only	Threaded outlet only	Bracket mounting
Thread	5	5	2	5			1
G3/4	Y68A-6GN-N1N	Y68A-6GN-N2N	5524-55	74785-98	T68H-6GB-B2N	T68H-6GC-B2N	18-001-979
G1	Y68A-8GN-N1N	Y68A-8GN-N2N	5524-52		T68H-8GB-B2N	T68H-8GC-B2N	18-001-979
G1 1/4	Y68A-AGN-N1N	Y68A-AGN-N2N	5523-52		T68H-AGB-B2N	T68H-AGC-B2N	18-001-978
G1 1/2	Y68A-BGN-N1N	Y68A-BGN-N2N	5523-93		T68H-BGB-B2N	T68H-BGC-B2N	18-001-972
3/4 PTF	Y68A-6AN-N1N	Y68A-6AN-N2N	5524-53		T68H-6AB-B2N	T68H-6AC-B2N	18-001-979
1 PTF	Y68A-8AN-N1N	Y68A-8AN-N2N	5524-50		T68H-8AB-B2N	T68H-8AC-B2N	18-001-979
1 1/4 PTF	Y68A-AAN-N1N	Y68A-AAN-N2N	5523-50		T68H-AAB-B2N	T68H-AAC-B2N	18-001-978
1 1/2 PTF	Y68A-BAN-N1N	Y68A-BAN-N2N	5523-95		T68H-BAB-B2N	T68H-BAC-B2N	18-001-972

Nut	Tamper resistant cap & seal wire	Porting block	Padlock with two keys
4	3		
5520-89	4355-51	18-026-986 (G1/4 & G1/2)	0613633 (brass)

Service kit



Gauges

Center back connection, white face (full technical specification see datasheet 8.900.900)

6

Pressure range bar *1)	MPa	psi	Ø	Thread size	Model
0 ... 4	0 ... 0,4	0 ... 58	50 mm	R1/8	18-015-011
0 ... 10	0 ... 1	0 ... 145	50 mm	R1/8	18-015-013
0 ... 25	0 ... 2,5	0 ... 362	50 mm	R1/8	18-015-014

Center back connection, black face for North America (full technical specification see datasheet 8.900.900)

6

Pressure range psig *1)	bar	MPa	Ø	Thread size	Model
0 ... 60	0 ... 4	0 ... 0.4	2" (50 mm)	1/8 NPT	18-015-202
0 ... 160	0 ... 11	0 ... 1.1	2" (50 mm)	1/8 NPT	18-015-204
0 ... 400	0 ... 28	0 ... 2.8	2" (50 mm)	1/8 NPT	18-015-206

*1) primary scale

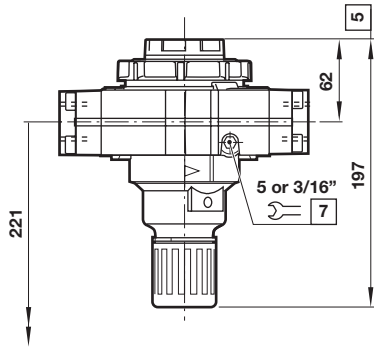
*1) primary scale

Dimensions

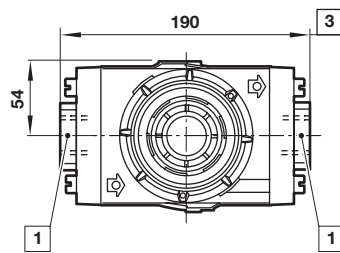
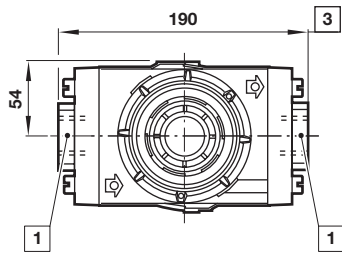
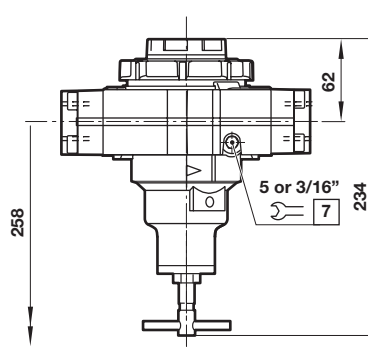
Dimensions in mm
Projection/First angle



Standrad



T-bar



Minimum clearance required to remove unit from yoke

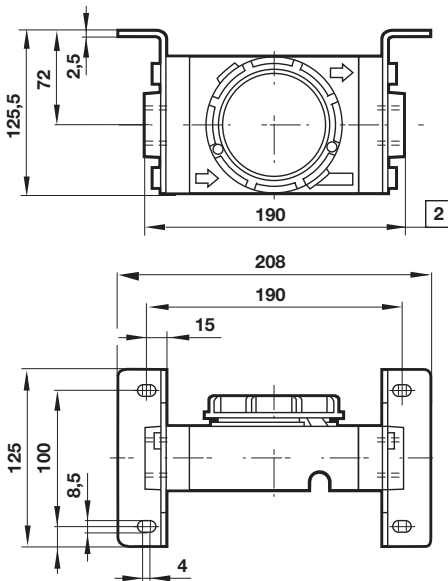
1 Main ports 3/4", 1", 1 1/4" or 1 1/2"

3 Plus 10 mm for ports 1 1/4" or 1 1/2"

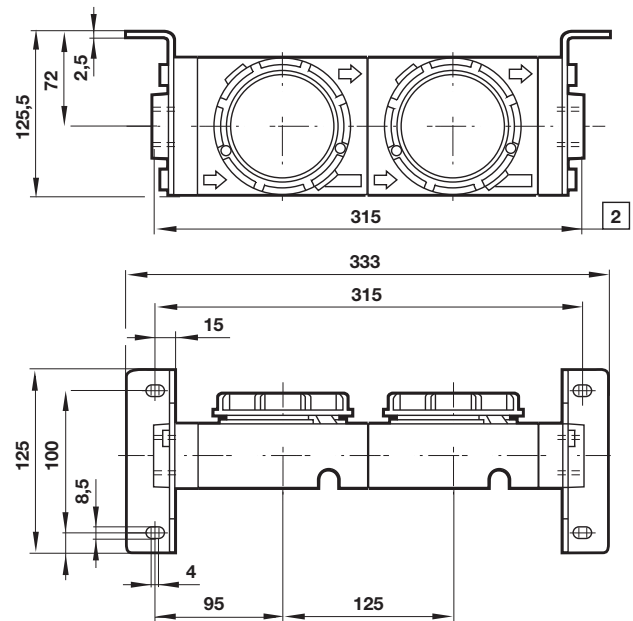
5 Reduces by 4 mm with knob in locked position

7 Gauge port 1/8"

Single yoke with bracket

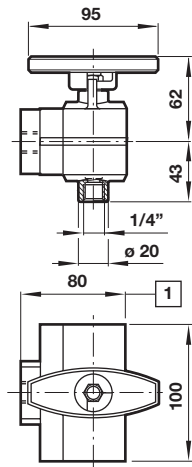
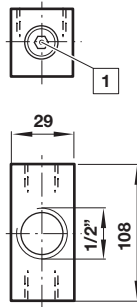


Double yoke with bracket



2 For 1 1/4" and 1 1/2" ported yokes add 10 mm

2 For 1 1/4" and 1 1/2" ported yokes add 10 mm

3/2 Shut-off valve

Porting block

 Dimensions in mm
Projection/First angle


1 For 1 1/2" ported yokes add 5 mm

1 Two additional plugged G1/4 ports

Warning

These products are intended for use in industrial compressed air systems only. Do not use these products where pressures and temperatures can exceed those listed under »**Technical features/data**«.

Before using these products with fluids other than those specified, for non-industrial applications, life-support systems or other applications not within published specifications, consult IMI Precision Engineering, IMI International s.r.o.

Through misuse, age, or malfunction, components used in fluid power systems can fail in various modes. The system designer is warned to consider the failure modes of all component parts used in fluid power systems and to provide adequate safeguards to prevent personal injury or damage to equipment in the event of such failure.

System designers must provide a warning to end users in the system instructional manual if protection against a failure mode cannot be adequately provided.

System designers and end users are cautioned to review specific warnings found in instruction sheets packed and shipped with these products.

- > **Port size: 1/4" ... 1/2" (ISO G/PTF)**
- > **Excelon design allows in-line or modular installation**
- > **Push to lock adjusting knob with optional tamper resistant accessory**



Technical features

Medium:

Compressed air only

Maximum operating pressure:

20 bar (300 psi)

Pressure range:

Standard

0,3 ... 10 bar (4 ... 145 psi)

Optional

0,3 ... 4 bar (4 ... 58 psi)

0,7 ... 17 bar (10 ... 250 psi)

Port size:

G1/4, G3/8, G1/2,
1/4 PTF, 3/8 PTF 1/2 PTF

Gauge port:

Rc 1/8 with ISO G main ports
1/4 PTF with PTF main ports

Flow:

60 dm³/s maximum

At port size: 3/8"

Inlet pressure 10 bar (145 psi);

6,3 bar (91 psi) set pressure and a

Δp: 1 bar (14,5 psi) droop from set

Non-return valve:

R73G – without return valve

R73R – with return valve

Ambient/Media temperature:

-34° ... +80°C (-30° ... +176°F)

Version with gauge:

-34° ... +65°C (-30° ... +149°F)

Air supply must be dry enough

to avoid ice formation at

temperatures below +2°C (+35°F).

Materials:

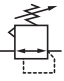
Body: Die cast aluminium

Bottom plug: Acetal

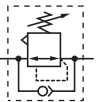
Metal bonnet: Zinc

Elastomers: NBR

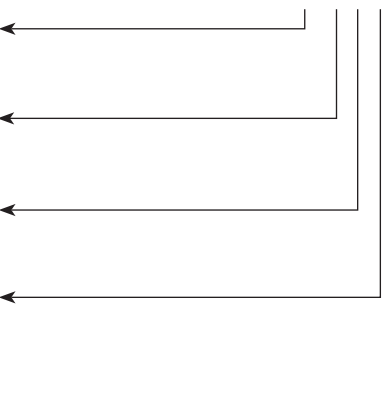
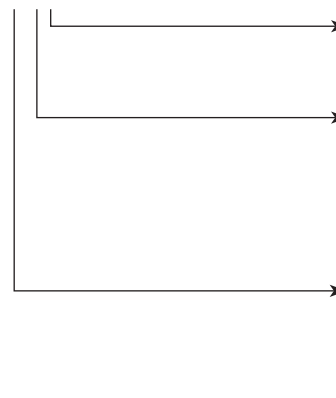
Technical data R73G - standard models with diaphragm

Symbol	Port size	Size	Pressure range (bar)	Adjustment	Weight (kg)	Model
	G1/4	—	0,3 ... 10	Knob	0,48	R73G-2GK-RMN
	G3/8	Basic	0,3 ... 10	Knob	0,48	R73G-3GK-RMN
	G1/2	—	0,3 ... 10	Knob	0,48	R73G-4GK-RMN

Technical data R73R with diaphragm

Symbol	Port size	Size	Pressure range (bar)	Adjustment	Weight (kg)	Model
	G1/4	—	0,3 ... 10	Knob	0,48	R73R-2GK-RMN
	G3/8	Basic	0,3 ... 10	Knob	0,48	R73R-3GK-RMN
	G1/2	—	0,3 ... 10	Knob	0,48	R73R-4GK-RMN

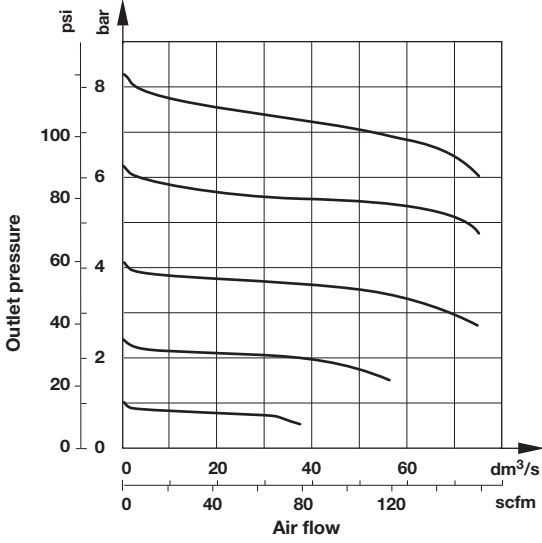
Option selector

Option selector		R73★-★★★-★★★		Option selector	
Non-return valve	Substitute			Gauge	Substitute
Without (standard)	G			With	G
Integrated	R			Without (standard)	N
Port size	Substitute			Outlet pressure adjustment range *2)	Substitute
1/4"	2			0,3 ... 4 bar	F
3/8"	3			0,3 ... 10 bar (standard)	M
1/2"	4			0,7 ... 17 bar	S
Thread form	Substitute			Diaphragm	Substitute
PTF	A			Relieving (standard)	R
ISO G parallel (standard)	G			Non relieving	N
Adjustment	Substitute				
Knob (standard)	K				
T-bar	T				

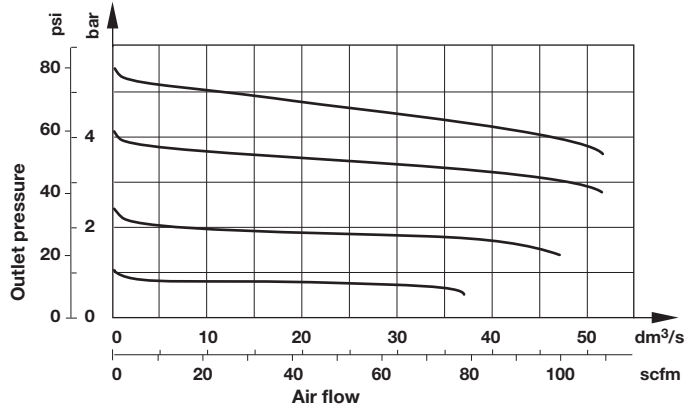
*2) Outlet pressure can be adjusted to pressures in excess of, and less than, those specified. Do not use these units to control pressures outside of the specified ranges.

Flow characteristics

Inlet pressure: 10 bar (145 psi)
Port size: 3/8"



Inlet pressure: 7 bar (101 psi)
Port size: 3/8"



Accessories

<p>Wall mounting bracket</p> <p>Page 4 4424-50</p>	<p>Neck mounting bracket</p> <p>Page 4 4461-50</p>	<p>Panel nut</p> <p>5191-88</p>	<p>Quikclamp®</p> <p>Page 3 4314-51</p>	<p>Quikclamp with wall bracket®</p> <p>Page 3 4314-52</p>	<p>Tamper resistant kit</p> <p>4455-51</p>
<p>Quikmount pipe adaptor *1)</p> <p>Page 3 G1/4: 4315-09 G3/8: 4315-10 G1/2: 4315-11 1/4 PTF: 4315-01 3/8 PTF: 4315-02 1/2 PTF: 4315-03</p>	<p>Porting block with three alternative 1/4" ports</p> <p>Page 3 G1/4: 4316-52 1/4 PTF: 4316-50</p>	<p>2/2 Shut-off valves (for full technical specification see datasheet 8.180.600)</p> <p>Page 4 G1/4: T73B-2GA-P1N G3/8: T73B-3GA-P1N G1/2: T73B-4GA-P1N 1/4 PTF: T73B-3AA-P1N 3/8 PTF: T73B-2AA-P1N 1/2 PTF: T73B-4AA-P1N</p>	<p>3/2 Shut-off valves (for full technical specification see datasheet 8.180.600)</p> <p>Page 4 G1/4: T73T-2GA-P1N G3/8: T73T-3GA-P1N G1/2: T73T-4GA-P1N 1/4 PTF: T73T-3AA-P1N 3/8 PTF: T73T-2AA-P1N 1/2 PTF: T73T-4AA-P1N</p>		

*1) Please use a Quikmount pipe adaptor if the Quikclamp be mounted at inlet or outlet side.

Pressure switch

Porting block for pressure switch



Page 3

0523110000000000

Pressure switch (0,5 ... 8 bar)



0881300000000000

Padlock

Padlock (brass) with two keys *1)



0613633000000000

*1) For shut-off valves and tamper resistant kit

Service kits

Service kit



R73G-KITR

Gauge

Center back connection, white face (for full technical specification see datasheet 8.900.900)



Pressure range bar *1	Mpa	psi	Ø	Thread size	Model
0 ... 6	0 ... 0,6	0 ... 84	50 mm	R1/8	18-015-012
0 ... 10	0 ... 1	0 ... 145	50 mm	R1/8	18-015-013
0 ... 25	0 ... 2,5	0 ... 362	50 mm	R1/8	18-015-014

*1) primary scale

Center back connection, black face for North America (for full technical specification see datasheet 8.900.900)



psig *1	bar	Mpa	Ø	Thread size	Model
0 ... 60	0 ... 4	0 ... 0,4	2" (50 mm)	1/4 NPT	18-015-208
0 ... 160	0 ... 11	0 ... 1,1	2" (50 mm)	1/4 NPT	18-015-209
0 ... 300	0 ... 20	0 ... 2,1	2" (50 mm)	1/4 NPT	18-015-210

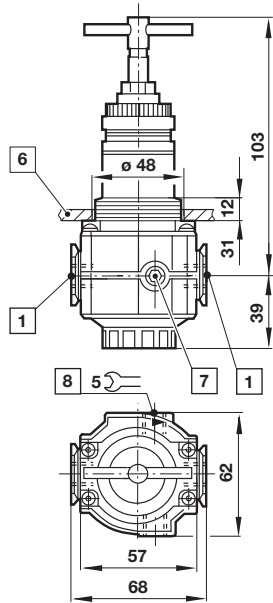
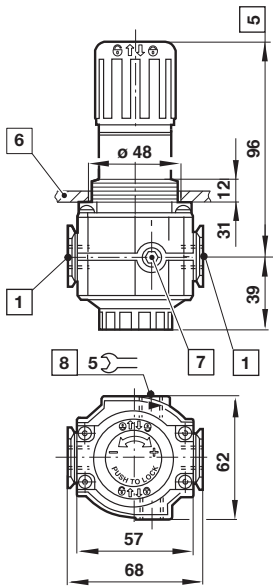
*1) primary scale

Drawings

Standard

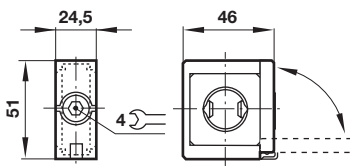
T-bar

Dimensions in mm
Projection/First angle

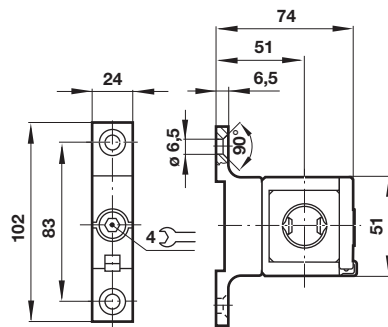


- 1 Main ports 1/4", 3/8" or 1/2"
- 5 Reduces by 4 mm with knob in locked position
- 6 Panel thickness 2 ... 6 mm
- 7 Gauge port Rc1/8 for ISO G and 1/4 PTF for PTF main ports
- 8 Alternative gauge port plugged

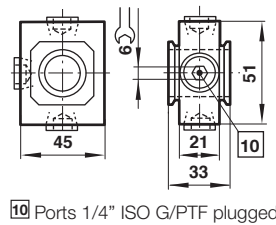
Accessories
Quikclamp®



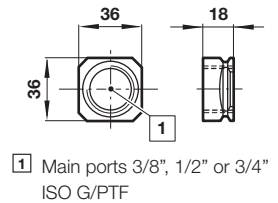
Quikclamp® with wall bracket



Porting block



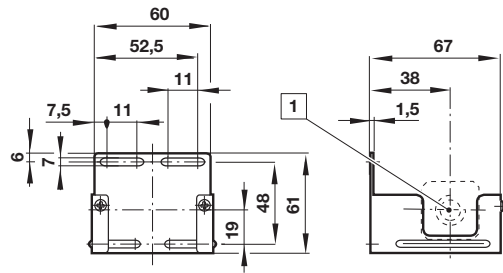
Pipe adapter



- 1 Main ports 3/8", 1/2" or 3/4" ISO G/PTF

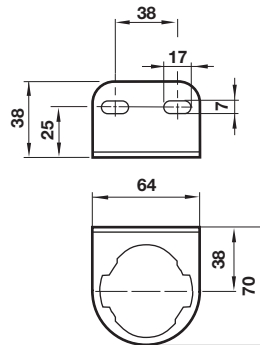
- 10 Ports 1/4" ISO G/PTF plugged

Wall mounting bracket



1 Main ports

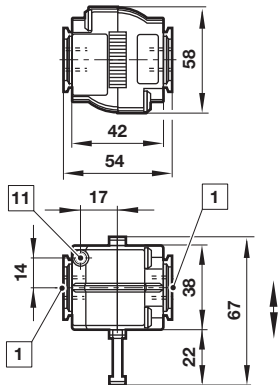
Neck mounting bracket



Dimensions in mm
Projection/First angle

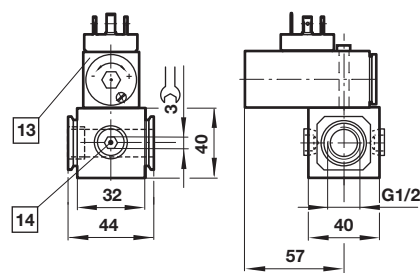


Shut-off valves



- 1 Main ports 1/4", 3/8" or 1/2" ISO G/PTF
- 12 Exhaust port M5 at 3/2 valve only

Porting block for pressure switch



- 13 Pressure switch is not in scope of delivery
- 14 Alternative G1/2 ports plugged

Warning

These products are intended for use in industrial compressed air systems only. Do not use these products where pressures and temperatures can exceed those listed under

»Technical features/data«.

Before using these products with fluids other than those specified, for non-industrial applications, life-support systems or other applications not within published specifications, consult IMI Precision Engineering, Norgren Inc. Through misuse, age, or malfunction, components used in fluid power systems can fail in various modes.

The system designer is warned to consider the failure modes of all component parts used in fluid power systems and to provide adequate safeguards to prevent personal injury or damage to equipment in the event of such failure.

System designers must provide a warning to end users in the system instructional manual if protection against a failure mode cannot be adequately provided.

System designers and end users are cautioned to review specific warnings found in instruction sheets packed and shipped with these products.

R84G - Pressure regulators

Excelon® Plus Modular System

- > Port size: 3/8" ... 3/4" (ISO G/PTF)
- > Excelon® Plus design allows in-line installation or modular installation with other Excelon® Plus products
- > Push to lock adjusting knob with built in tamper resistant feature
- > Easy to read flush mounted gauge as standard, integrated electronic pressure sensor as option



Technical features pressure regulator

Medium:

Compressed air only

Maximum supply pressure:

20 bar (290 psi)

Outlet pressure ranges:

0,3 ... 10 bar (4 ... 145 psi),
0,3 ... 4 bar (4 ... 58 psi) optional,
0,7 ... 17 bar (10 ... 247 psi) optional

Gauge:

Integrated as standard
Gauge port 1/8 or electronic pressure sensor as option

Port size:

G3/8, G1/2, G3/4,
3/8 PTF, 1/2 PTF, 3/4 PTF

Diaphragm Type:

Relieving

Flow:

125 dm³/s at port size: 1/2",
inlet pressure 10 bar (145 psi),
6,3 bar (91 psi) set pressure and
a Δp: 1 bar (14,5 psi) droop from set.

Ambient/Media temperature:

-20 ... +65°C (-4 ... +149°F)
Air supply must be dry enough
to avoid ice formation at
temperatures below +2°C (+35°F).

Atex:

Regulators R84 are in conformity
with Atex 2014/34/EU

Ex II 2 GD

Ex h IIC T6 Gb

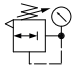
EX h IIIC T85°C Db

excluding all versions with
electronic pressure sensor

Materials:

Body: Die cast aluminium
Body covers: ABS
Bonnet: POM/Aluminium
Valve: PP
Elastomers: NBR

Technical data R84G - standard models with integrated flush mounted gauge

Symbol	Port size	Pressure range (bar)	Adjustment	Integrated gauge (bar)	Weight (kg)	Model*)
	G3/8	0,3 ... 10	Knob	0 ... 10	0,59	R84G-3GK-RMG
	G1/2	0,3 ... 10	Knob	0 ... 10	0,59	R84G-4GK-RMG
	G3/4	0,3 ... 10	Knob	0 ... 10	0,59	R84G-6GK-RMG

*) All models shown here are supplied with integrated gauge applicable for flow direction left to right.

With flow direction right to left please use the online configurator www.norgren.com/air-preparation-configurator or contact Norgren

R84G - Pressure regulators with integrated electronic pressure sensor

- > Electronic monitoring of secondary pressure
- > 1.44" full colour graphic display. Excellent Visual Management.
- > Parameter Adjustment via front screen Buttons or Accessed Via IO-Link
- > Configurable switching output
- > Adjustable settings:
 - Setpoint,
 - Tolerance,
 - Hysteresis,
 - Pressure Units,
 - Temperature Units,
 - Screen Orientation,
 - Digital Output Type (NPN, PNP, Push-Pull),
 - Digital Output State (Normally High, Normally Low)
- > Install as a standard electronic pressure sensor or a pressure transducer with IO-Link



Technical features electronic pressure sensor

Electrical parameters

Secondary pressure measurement range:

0 ... 10 bar
(0 ... 145 psi, 0 ... 1.0 MPa)

Repeatability:

≤ 0.1% of full scale (FS) at stable temperature

Accuracy:

≤ 1.5% of full scale (FS) of detected pressure (0 ... +50°C, +32 ... +122°F)

Units:

Pressure: bar, psi, MPa
Temperature: °C, °F
Voltage: V

Display:

1.44" full colour TFT LCD
Text / background colours:
white/green: pressure in range
white/red: pressure out of range
white/amber: error
black white: setting mode

Display fields:

User configurable identifier, pressure value, pressure units, user configurable message, menu

IO-Link function:

Pressure information
Pressure out of range warnings
Temperature diagnostic
Supply voltage diagnostic
Operating time diagnostic

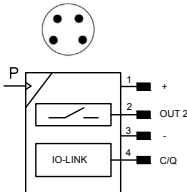
Min. cycle time:

20 ms

For product IODD file please use the online link <http://s.norgren.com/digital-gauge-iodd>

for a copy of the Quick Start Guide or comprehensive Operators manual please use the following online link www.norgren.com/excelon-plus

Electrical connection M8 x 1

	Pin-No.	Signal	Cable
	1	L+ (24V)	brown
	2	Out 2 (switching)	white
	3	L- (0V)	blue
	4	C/Q (IO-Link)	black

Electrical connection:

M8 x 1

Power supply:

18 ... 30 V d.c.

Current consumption:

20 mA

Electromagnetic compatibility:

According to EN 61000-6-2;
EN 61000-6-3

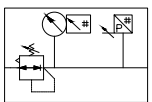
Switching output:

Configurable NPN / PNP / Push-Pull / NO / NC / hi-Z

Load current:

100mA with short circuit protection

Technical data R84G - standard models

Symbol	Port size	Pressure range (bar)	Adjustment	Integrated gauge (bar)	Weight (kg)	Model*)
	G3/8	0,3 ... 10	Knob	0 ... 10	0,79	R84G-3GK-RME
	G1/2	0,3 ... 10	Knob	0 ... 10	0,79	R84G-4GK-RME
	G3/4	0,3 ... 10	Knob	0 ... 10	0,79	R84G-6GK-RME

*) All models shown here are supplied with integrated pressure sensor applicable for flow direction left to right.

With flow direction right to left please use the online configurator www.norgren.com/air-preparation-configurator or contact Norgren

Option selector *1)
R84G-★★★★-R★★

Port size	Substitute
3/8"	3
1/2"	4
3/4"	6
Thread form	Substitute
PTF	A
ISO G parallel (standard)	G
Adjustment	Substitute
Knob (standard)	K
T-bar	T*2)

Gauge	Substitute
With integrated digital pressure sensor *3)	E
With (fitted integrated gauge)	G
Without integrated gauge but with gauge port 1/8"	N
Pressure range *4)	Substitute
0,3 ... 4 bar	F
0,3 ... 10 bar (standard)	M
0,7 ... 17 bar	S*2)

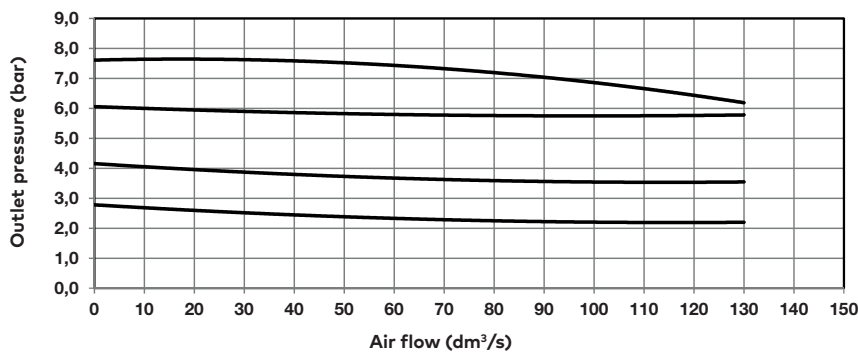
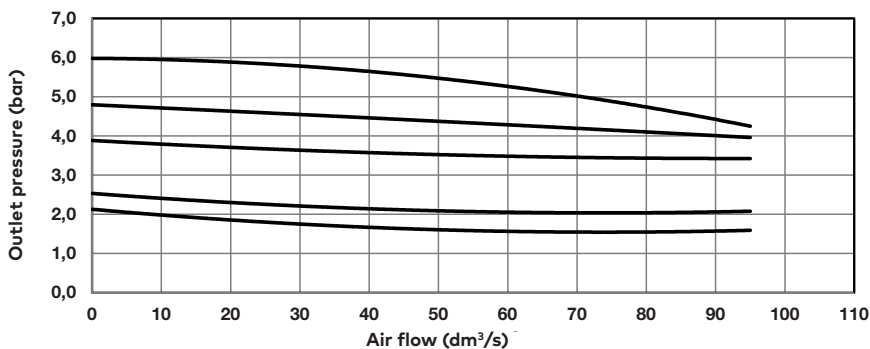
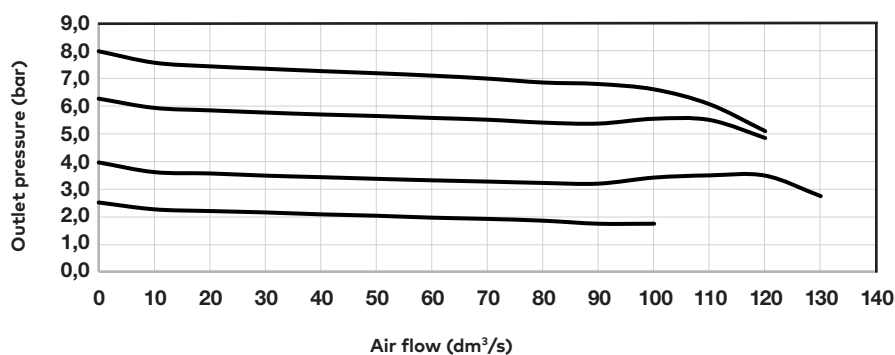
*1) All models shown here are applicable for flow direction left to right.

With flow direction right to left please use the online configurator www.norgren.com/air-preparation-configurator or contact Norgren

*2) Units with 17 bar outlet pressure range are available only with the T-bar adjustment. Not available in connection with integrated pressure sensor.

*3) Only available with 10 or 4 bar pressure range

*4) Outlet pressure can be adjusted to pressures in excess of, and less than, those specified. Do not use these units to control pressures outside of the specified ranges.

Flow characteristics
Inlet pressure: 10 bar (145 psi)
Port size: 1/2"

Inlet pressure: 7 bar (101 psi)
Port size: 1/2"

Inlet pressure: 10 bar (145 psi)
Port size: 3/8"


Accessories

Quikclamp®



Page 6
840014-51KIT

Quikclamp® with bracket assembled



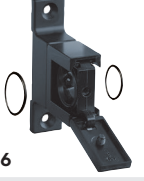
Page 6
840014-52KIT

Hybrid Quikclamp® *1



Page 6
840014-61

Hybrid Quikclamp® with bracket assembled *1



Page 6
840014-62

*1) To connect new Excelon Plus to old Excelon 74/73 units. Having the same hole centres as 74 series mounting bracket.
A Quikclamp adds 13.6 mm to the overall width of a combination unit

Neck mounting bracket and panel nut



Page 6
840068-51KIT

Panel mounting nut



Page 6
840048-89KIT

Mounting bracket



Page 6
840024-50KIT

Integrated gauge 10 bar gauge



Page 6
840073-01KIT

Integrated gauge 20 bar gauge



Page 6
840073-02KIT

Gauge adaptor kit 1/8 PTF



Page 6
840100-01KIT

Gauge adaptor kit R 1/8



Page 6
840100-02KIT

Full flow porting block horizontal, 3/4 PTF



Page 7
840028-50KIT

Full flow porting block horizontal, G3/4



Page 7
840028-53KIT

Full flow porting block vertical, 3/4"PTF



Page 7
840028-68KIT

Full flow porting block vertical, G3/4"



Page 7
840028-69KIT

Pressure switch interface block (18D pressure switch) G1/4



Page 8
0337717000000000

Pressure sensing block 1/4 PTF



Page 7
840016-50KIT

Pressure sensing block G1/4



Page 7
840016-51KIT


Port Adaptors



Page 8


3/8 PTF	840015-02KIT
1/2 PTF	840015-03KIT
3/4 PTF	840015-04KIT
G3/8	840015-10KIT
G1/2	840015-11KIT
G3/4	840015-12KIT

Padlock



Page 8
840055-01KIT

Lockout device



Page 8
840055-02KIT

**Pressure switch 18D
(0,5 ... 8bar) *1**

Page 8

0881300

**Digital pressure switch
51D (-1 ... 10 bar) *2**

Page 8

0860810

**Electronic Pressure Sensor
– stand alone version *3**


Q84G

IO-Link cables
Connection cable M8x1 for intergated electronic pressure sensor


Description	Cable length (m)	Model
M8 female to M12 male	0,6	NC-084FS-124MS-A
	1,0	NC-084FS-124MS-1
	2,0	NC-084FS-124MS-2
	5,0	NC-084FS-124MS-5
M8 female to free end	3,0	NC-084FS-00000-3

*1) Flanged version. For other pressure ranges, please see data sheet 5.11.001

*2) For other pressure ranges, please see data sheet 5.11.385

*3) Q84G standalone electronic pressure sensor module
see <http://s.norgren.com/digital-gauge-iodd> for data-sheet 8.900.905.

Gauges

(For regulators with gauge port instead of integrated port)

**Center back connection, white face
(for full technical specification see datasheet 8.900.900)**

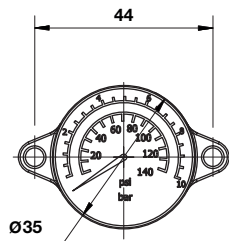
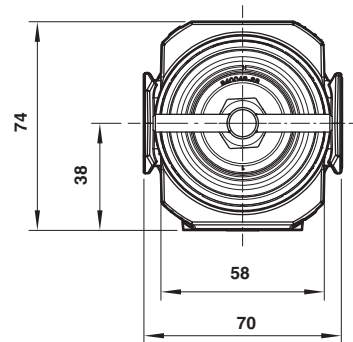
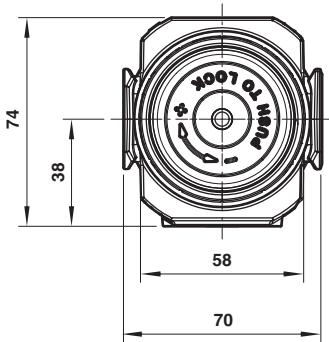
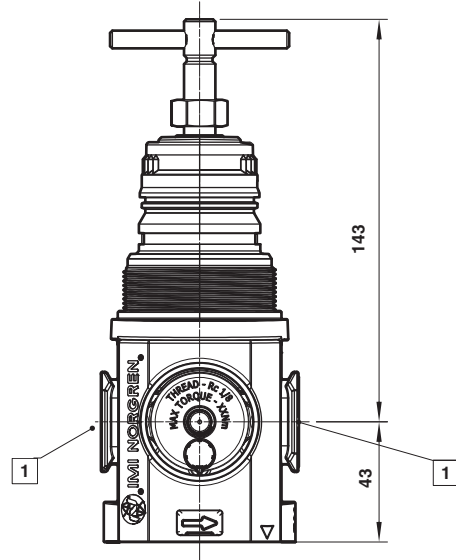
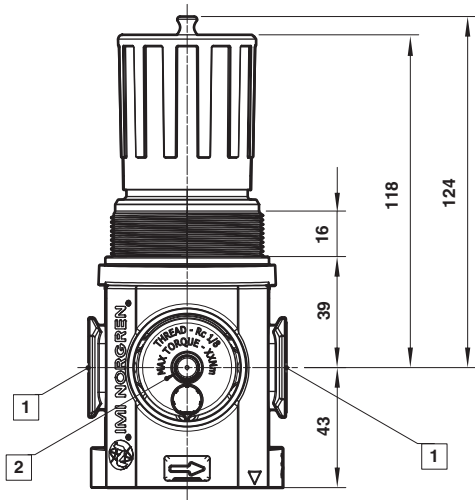

Pressure range (bar)*3) (MPa)	(psi)	∅	Thread size	Model	
0 ... 6	0 ... 0,6	0 ... 84	40 mm	R1/8	18-015-885
0 ... 10	0 ... 1	0 ... 145	40 mm	R1/8	18-015-989
0 ... 25	0 ... 2,5	0 ... 362	40 mm	R1/8	18-015-908

*3) primary scale

**R84 / B84
Elastomer Kit**

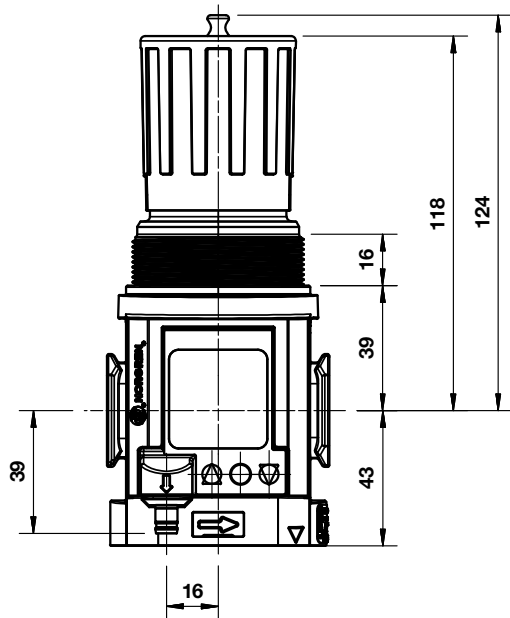
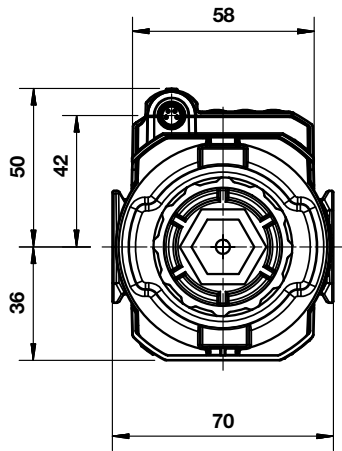

FRLB84-KIT

Dimensions

 Dimensions in mm
 Projection/First angle


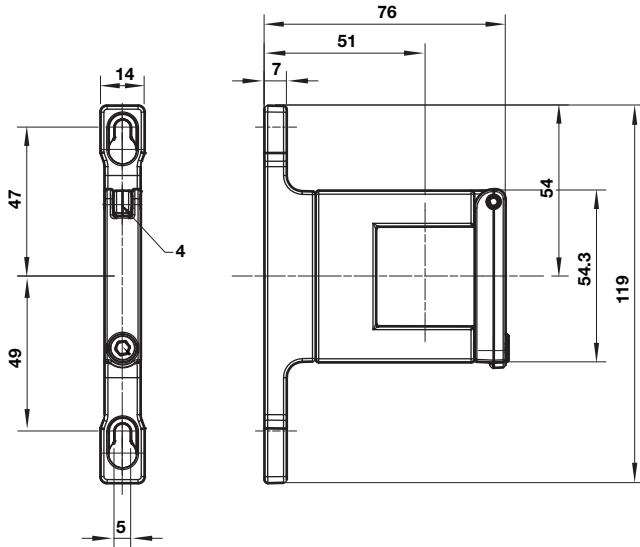
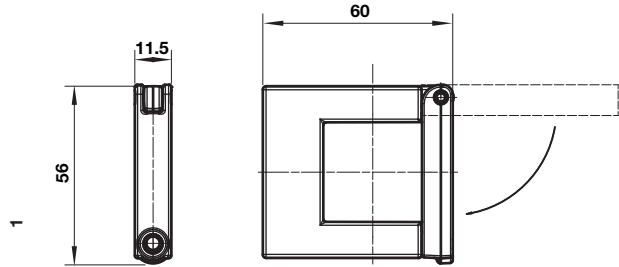
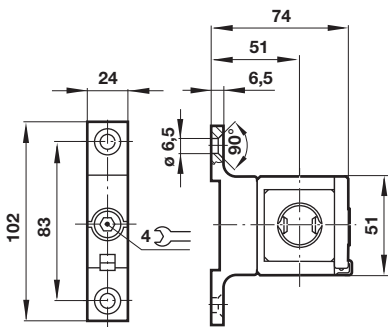
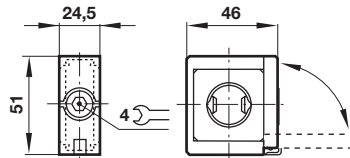
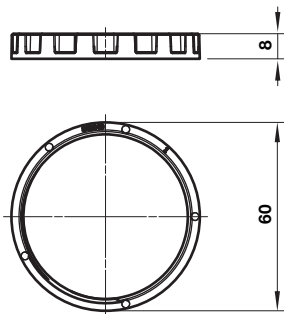
- 1 Main ports 3/8", 1/2" or 3/4"
(ISO G/PTF)
- 2 Gauge Port Rc 1/8 for ISO G and
1/8 PTF for PTF main ports

Dimensions
**R84G-
General Purpose Regulator**

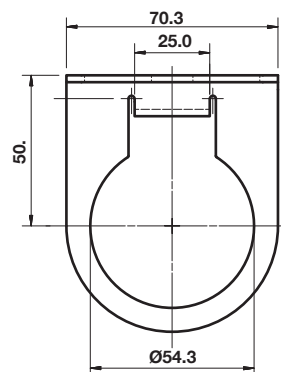
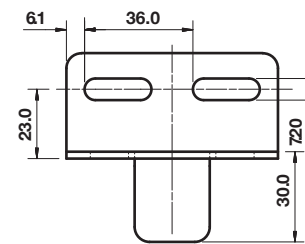
 Dimensions in mm
 Projection/First angle


Accessories

 Dimensions in mm
 Projection/First angle

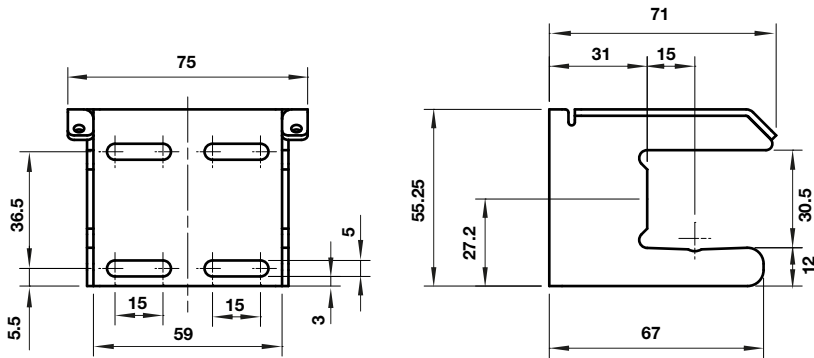
Quikclamp® with wall bracket

Quikclamp®

Hybrid-Quikclamp® with wall bracket

Hybrid-Quikclamp®

Panel mounting nut


Recommended panel hole size:
 ø 55 mm ... 57 mm
 Panel thickness:
 2 ... 6 mm

Neck mounting bracket


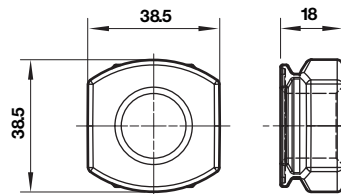
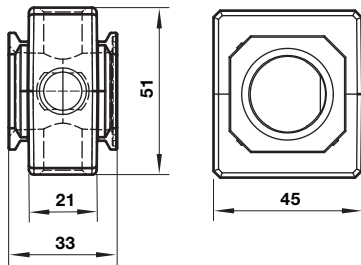
Mounting bracket

Dimensions in mm
Projection/First angle



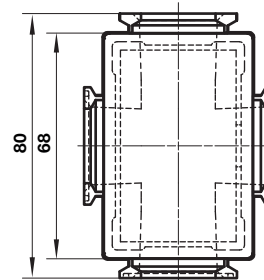
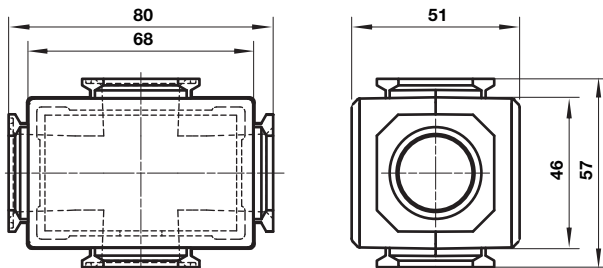
Pressure sensing block

Pipe adaptor

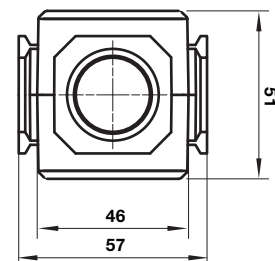
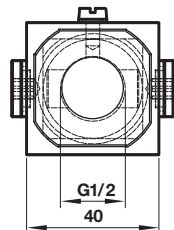
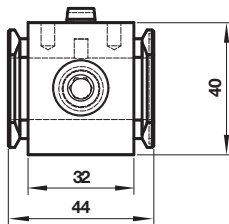


Full flow porting block horizontal

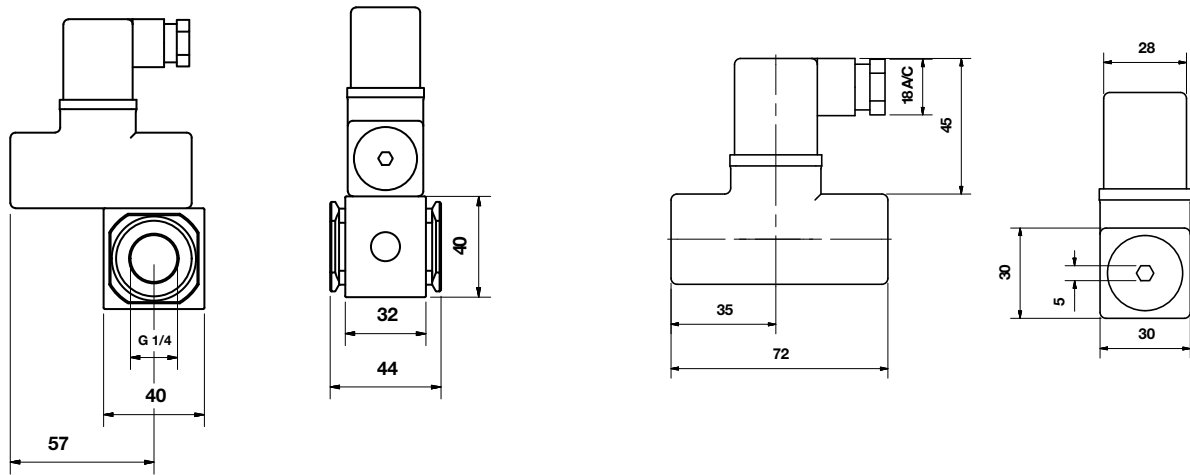
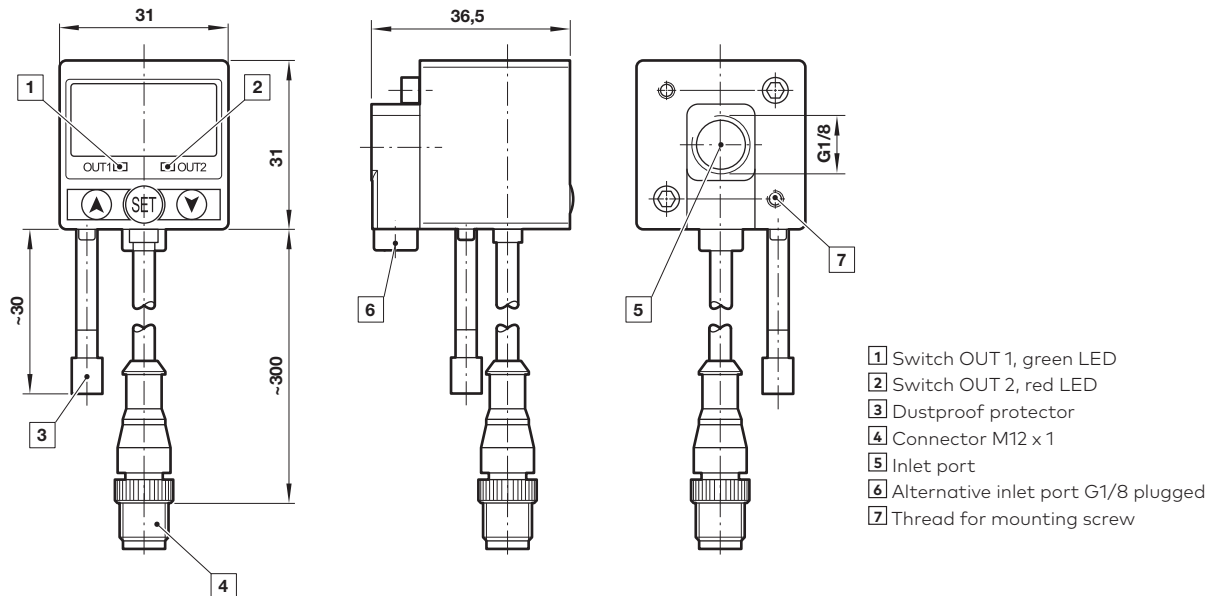
Full flow porting block vertical



Porting block for 18D pressure switch



**18D Porting block and
18D assembled**
18D Pressure switch

 Dimensions in mm
Projection/First angle

51D Pressure switch - digital

Warning

These products are intended for use in industrial compressed air systems only. Do not use these products where pressures and temperatures can exceed those listed under »**Technical features/data**«.

Before using these products with fluids other than those specified, for non-industrial applications, life-support systems or other applications not within published specifications, consult IMI Precision Engineering, Norgren Ltd.

Through misuse, age, or malfunction, components used in fluid power systems can fail in various modes. The system designer is warned to consider the failure modes of all component parts used in fluid power systems and to provide adequate safeguards to prevent personal injury or damage to equipment in the event of such failure.

System designers must provide a warning to end users in the system instructional manual if protection against a failure mode cannot be adequately provided.

System designers and end users are cautioned to review specific warnings found in instruction sheets packed and shipped with these products.